



# SUBMERSIBLE SEWAGE PUMP

## INTELLIGENT FLOW FOR GOOD



**LEO GROUP PUMP CO., LTD.**  
**LEO GROUP PUMP (ZHEJIANG) CO., LTD.**

📍 No.1, 3rd Street, East Industry Center, Wenling, Zhejiang, 317511, P.R.China

🌐 [www.leopump.com](http://www.leopump.com)

✉ [export@leopump.com](mailto:export@leopump.com)

☎ +86-576-8998 6360

☎ +86-576-8998 9898



Website



Facebook



YouTube

LEO reserves all the right of products modification without prior notification

2023 v2.0

[www.leopump.com](http://www.leopump.com)



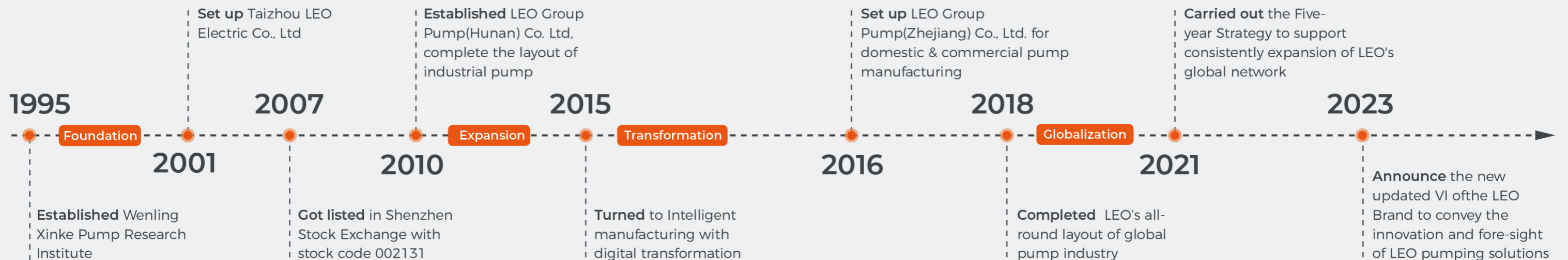


## Intelligent Flow For Good

LEO PUMP, founded in 1995, is a leading professional pump & system solution provider, engaged in R&D, manufacture, sales and service of all series pumps and systems. Our products are widely used in water conservancy & water resources, power plants, petrochemical industry, mining & metallurgical industry, civilian water applications, garden machinery and solar pump& system.

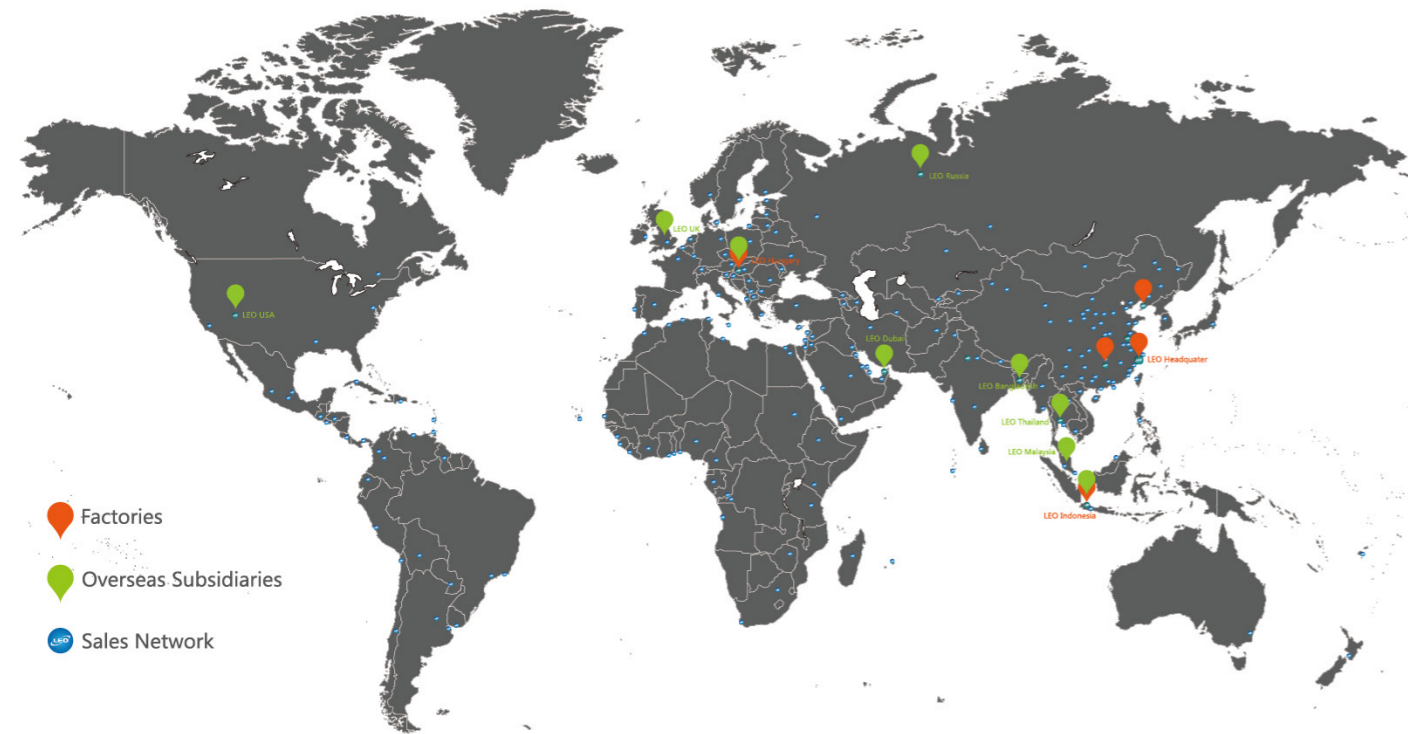
With more than 28 years' profession and experience, LEO has become one of the world's famous pump brands. We have set up many production and sales subsidiaries in key regional markets, such as Dubai, Indonesia, Thailand, Malaysia, Bangladesh, USA, Hungary and Russia. Our innovations have brought changes to more than 150 countries and regions, served over 500 million end-users.

We keep adhering to philosophy of "run business with virtue, pursue success with perfection, win victory with efficiency, and go forward with right actions" and focus on developing safe and high-efficiency pump and system, being a sustainable development industry leader. Going forward we will continue our consistent creativity and development ability in each pump for human's health!

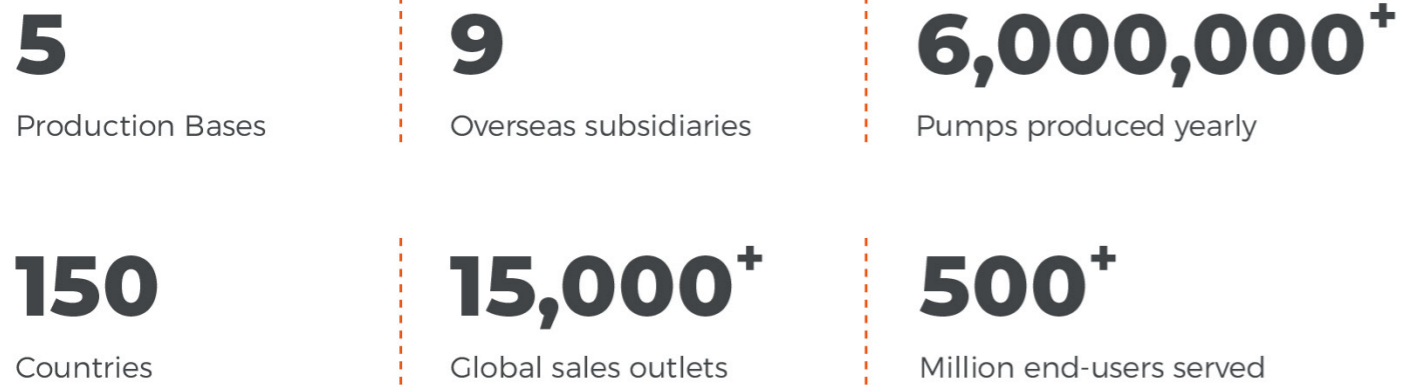




## LEO WORLD



## LEO IN NUMBERS



Globally we have 5 production plants and relevant professional sales and technical teams with over 500 technicians to support global sales and service. Besides, we also set up several sales and production subsidiaries in key regional markets in Asia, Europe, and America with global employees over 6,000.

With the devoting experience and extraordinary comprehensive strength, LEO has obtained over 700 patents and become a leading pioneer among pump manufacturers and we will keep focus on the development of safe and high-efficient pump&system, being a sustainable enterprise in the industry!



Pump Manufacturing Base for Domestic and Commercial Applications



Pump Manufacturing Base for General Industrial Pumps



Pump Manufacturing Base for Petrochemical Industry





### Application

- Drainage of wastewater from the attenuation tank, purifying tank and sewage tank in water treatment plant
- Drainage of waste water containing fibrous additives from leather factory and food processing factory
- Sewage management, accumulated water, septic tank, stock farm
- Pumping sewage from hotels, restaurants, schools and public buildings

### Pump

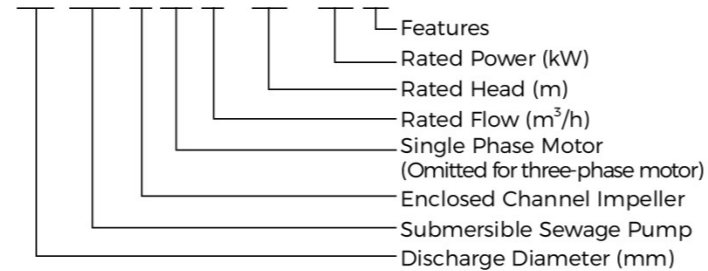
- High-efficiency & anti-clogging enclosed channel impeller
- Flexible installations with hoses, pipes or quick-coupling systems
- Float switch as standard accessory for single phase ( $\le 1.1\text{ kW}$ )
- Cable Length: 10m
- Double-end mechanical seal
- Stainless steel welded shaft
- Liquid temperature: 0 - 40 °C
- Liquid PH value: 4 - 10
- Max. immersion depth: 5 m

### Motor

- Frequency/Pole number: 50 Hz/2
- Insulation class: F
- Protection class: IP68
- Bearing: Ball type

### Identification Codes

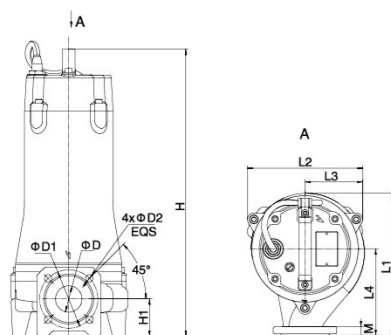
50 SW E m 8 - 16 - 1.1 L



### Technical Data

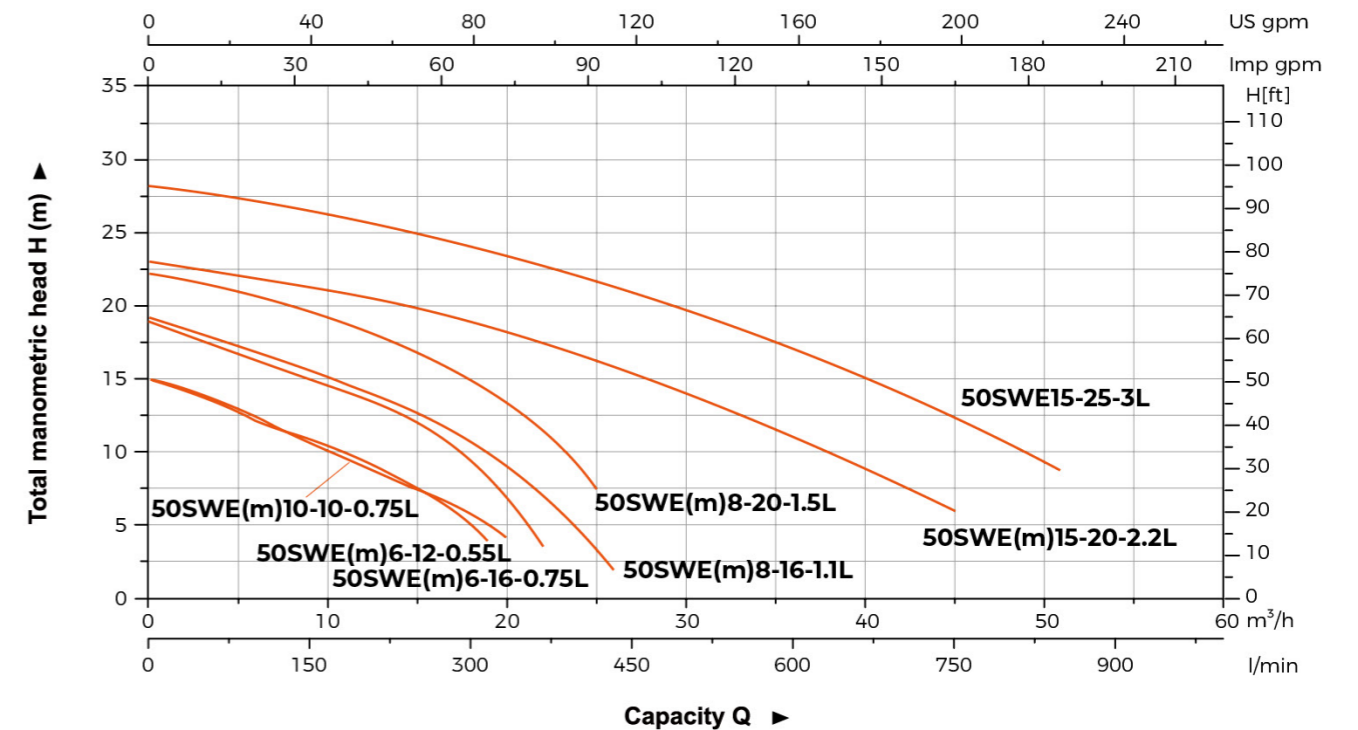
Model		Discharge	Power		Rated flow	Max. flow	Rated head	Max. head	Max. Solid Dia
Single Phase	Three Phase	mm (inch)	kW	HP	m³/h	m³/h	m	m	mm
50SWE m 6-12-0.55L	50SWE6-12-0.55L	50 (2")	0.55	0.75	6	19	12	15	20
50SWE m 6-16-0.75L	50SWE6-16-0.75L	50 (2")	0.75	1	6	22	16	19	20
50SWE m 10-10-0.75L	50SWE10-10-0.75L	50 (2")	0.75	1	10	20	10	15	20
50SWE m 8-16-1.1L	50SWE8-16-1.1L	50 (2")	1.1	1.5	8	26	16	19	15
50SWE m 8-20-1.5L	50SWE8-20-1.5L	50 (2")	1.5	2	8	25	20	22	15
50SWE m 15-20-2.2L	50SWE15-20-2.2L	50 (2")	2.2	3	15	45	20	23	25
-	50SWE15-25-3L	50 (2")	3	4	15	51	25	27	25

### Dimension



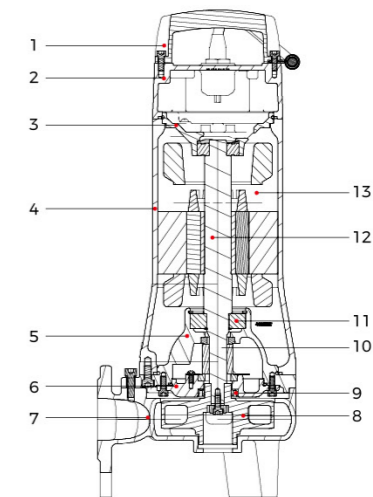
Model	L1 (mm)	L2 (mm)	L3 (mm)	L4 (mm)	H (mm)		H1 (mm)	D (mm)	D1 (mm)	D2 (mm)	M (mm)
					1~	3~					
50SWE(m)6-12-0.55L	212	184	96	120	461	461	65	45	110	14	14
50SWE(m)6-16-0.75L					479	479					
50SWE(m)10-10-0.75L	210	191	135	135	570	529	70	50	110	14	16
50SWE(m)8-16-1.1L	223				571	530					
50SWE(m)8-20-1.5L	227	221	112	163	-	561	70	50	110	14	16
50SWE(m)15-20-2.2L	268				-	561					
50SWE15-25-3L	268	221	112	163	-	561	70	50	110	14	16

### Hydraulic Performance Curves



### Materials Table

No.	Part	Material
1	Handle	ZG45
2	Upper cover	HT200
3	Upper bearing seat	HT200
4	Motor body	HT200
5	Oil chamber	HT200
6	Pump cover	HT200
7	Pump body	HT200
8	Impeller	HT200
9	Oil seal	
10	Mechanical seal	Upper: Sic/Carbon Lower: Sic/Sic
11	Bearing	
12	Rotor	
13	Stator	



### Package Information

Model	GW (kg)		L (mm)	W (mm)	H (mm)	Quantity (PCS/20'TEU)
	1~	3~				
50SWE(m)6-12-0.55L	24.7	24	746	254	286	544
50SWE(m)6-16-0.75L	26	25.3	746	254	286	544
50SWE(m)10-10-0.75L	25.8	25	746	254	286	544
50SWE(m)8-16-1.1L	33.6	31.7	749	289	368	354
50SWE(m)8-20-1.5L	43.2	38.4	924	284	363	294
50SWE(m)15-20-2.2L	44.9	46.3	924	284	363	294
50SWE15-25-3L	-	49.5	874	284	363	316





### Application

- Drainage of wastewater from the attenuation tank, purifying tank and sewage tank in water treatment plant
- Drainage of waste water containing fibrous additives from leather factory and food processing factory
- Sewage management, accumulated water, septic tank, stock farm
- Pumping sewage from hotels, restaurants, schools and public buildings

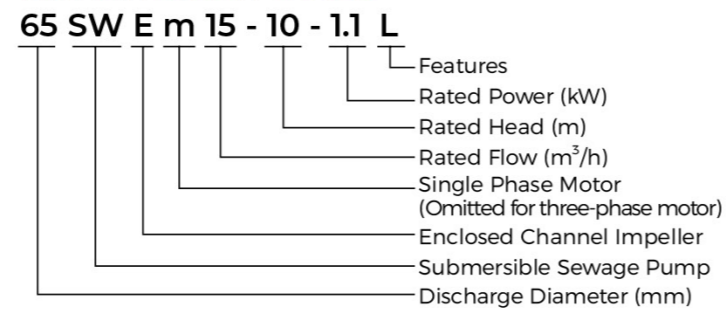
### Pump

- High-efficiency & anti-clogging enclosed channel impeller
- Flexible installations with hoses, pipes or quick-coupling systems
- Float switch as standard accessory for single phase ( $\le 1.1\text{ kW}$ )
- Cable Length: 10m
- Double-end mechanical seal
- Stainless steel welded shaft
- Liquid temperature: 0 - 40 °C
- Liquid PH value: 4 - 10
- Max. immersion depth: 5 m

### Motor

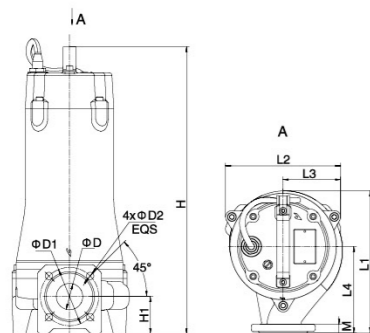
- Frequency/Pole number: 50 Hz/2
- Insulation class: F
- Protection class: IP68
- Bearing: Ball type

### Identification Codes



### Technical Data

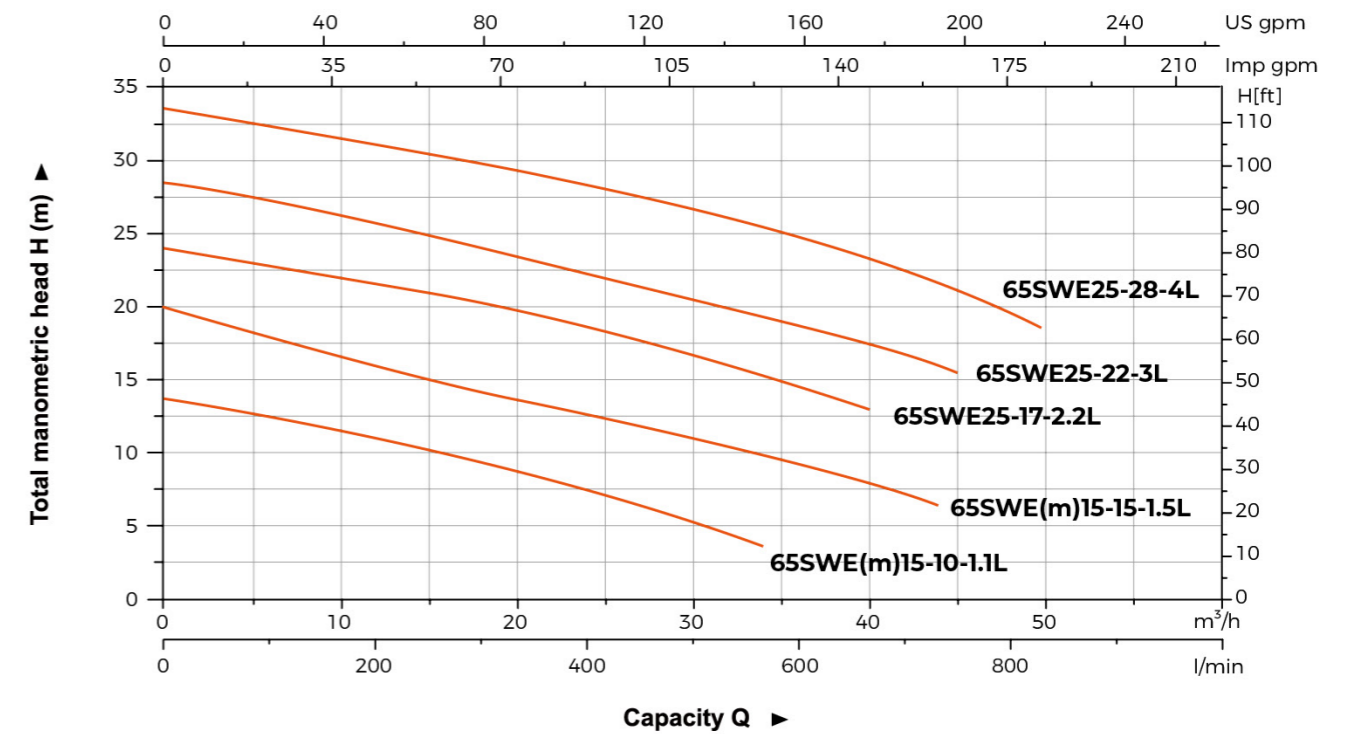
Model		Discharge	Power		Rated flow	Max. flow	Rated head	Max. head	Max. Solid Dia
Single Phase	Three Phase	mm (Inch)	kW	HP	$\text{m}^3/\text{h}$	$\text{m}^3/\text{h}$	m	m	mm
65SWE m15-10-1.1L	65SWE15-10-1.1L	65 (2.5")	1.1	1.5	15	34	10	14	25
65SWE m15-15-1.5L	65SWE15-15-1.5L	65 (2.5")	1.5	2	15	44	15	20	25
-	65SWE25-17-2.2L	65 (2.5")	2.2	3	25	40	17	24	25
-	65SWE25-22-3L	65 (2.5")	3	4	25	45	22	28.5	25
-	65SWE25-28-4L	65 (2.5")	4	5.5	25	50	28	31.5	25



### Dimension

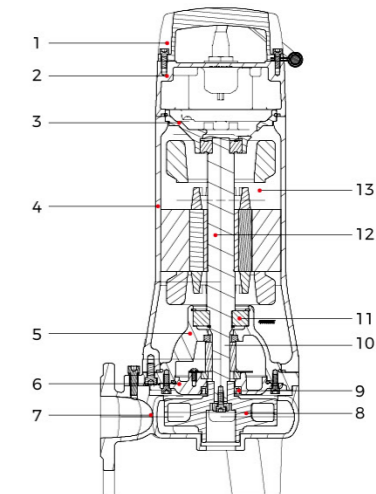
Model	L1 (mm)	L2 (mm)	L3 (mm)	L4 (mm)	H (mm)		H1 (mm)	D (mm)	D1 (mm)	D2 (mm)	M (mm)
					1~	3~					
65SWE(m)15-10-1.1L	288	225	117	178	490	490	77.5	65	130	14	16
65SWE(m)15-15-1.5L	581				540						
65SWE25-17-2.2L	540										
65SWE25-22-3L											
65SWE25-28-4L	571										

### Hydraulic Performance Curves



### Materials Table

No.	Part	Material
1	Handle	ZG45
2	Upper cover	HT200
3	Upper bearing seat	HT200
4	Motor body	HT200
5	Oil chamber	HT200
6	Pump cover	HT200
7	Pump body	HT200
8	Impeller	HT200
9	Oil seal	
10	Mechanical seal	Upper: Sic/Carbon Lower: Sic/Sic
11	Bearing	
12	Rotor	
13	Stator	



### Package Information

Model	GW (kg)		L (mm)	W (mm)	H (mm)	Quantity (PCS/20'TEU)
	1~	3~				
65SWE(m)15-10-1.1L	37.9	35.8	749	289	368	354
65SWE(m)15-15-1.5L	45.7	41.9	924	284	363	294
65SWE25-17-2.2L	-	44.1	924	284	363	294
65SWE25-22-3L	-	52	874	284	363	316
65SWE25-28-4L	-	55.1	874	284	363	316





### Application

- Drainage of wastewater from the attenuation tank, purifying tank and sewage tank in water treatment plant
- Drainage of waste water containing fibrous additives from leather factory and food processing factory
- Sewage management, accumulated water, septic tank, stock farm
- Pumping sewage form hotels, restaurants, schools and public buildings

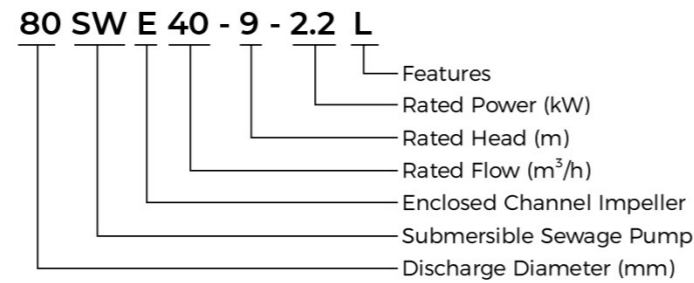
### Pump

- High-efficiency & anti-clogging enclosed channel impeller
- Flexible installations with hoses, pipes or quick-coupling systems
- Double-end mechanical seal
- Stainless steel welded shaft
- Liquid temperature: 0 - 40 °C
- Liquid PH value: 4 - 10
- Max. immersion depth: 5 m

### Motor

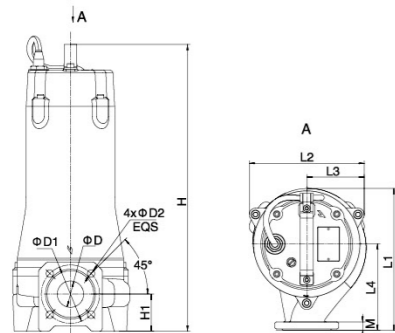
- Frequency/Pole number: 50 Hz/2
- Insulation class: F
- Protection class: IP68
- Bearing: Ball type

### Identification Codes



### Technical Data

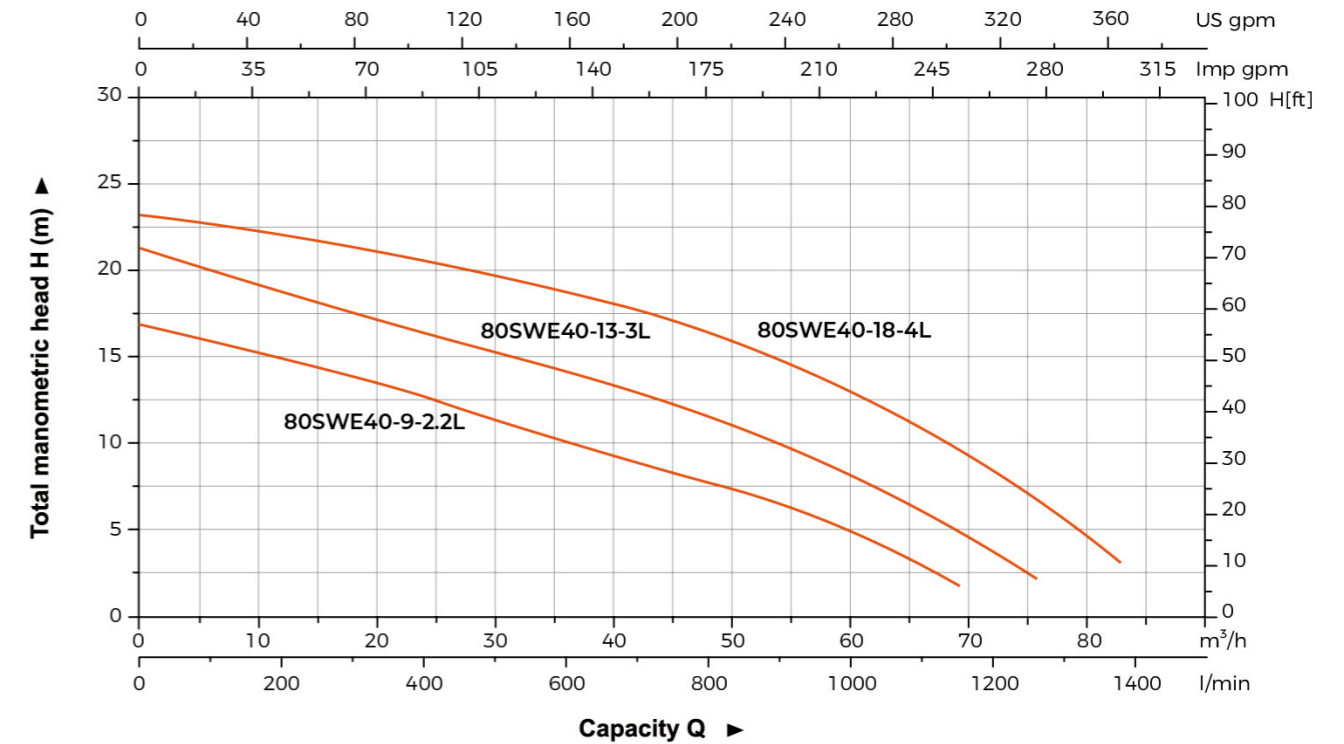
Model	Discharge	Power		Rated flow	Max. flow	Rated head	Max. head	Max. Solid Dia
	mm (inch)	kW	HP	m <sup>3</sup> /h	m <sup>3</sup> /h	m	m	mm
80SWE40-9-2.2L	80(3")	2.2	3	40	69.5	9	17	30
80SWE40-13-3L	80(3")	3	4	40	76	13	21	30
80SWE40-18-4L	80(3")	4	5.5	40	83	18	23	30



### Dimension

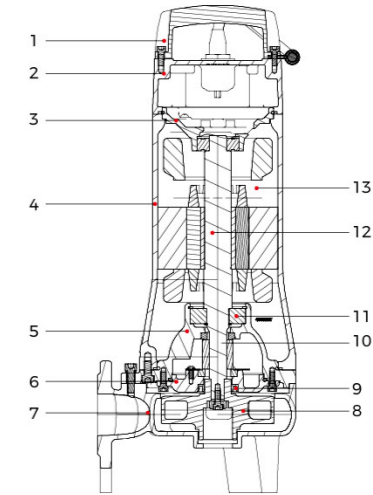
Model	L1 (mm)	L2 (mm)	L3 (mm)	L4 (mm)	H (mm)	H1 (mm)	D (mm)	D1 (mm)	D2 (mm)	M (mm)
80SWE40-9-2.2L										
80SWE40-13-3L	265	223	112	160	557	86	80	150	18	16
80SWE40-18-4L										

### Hydraulic Performance Curves



### Materials Table

No.	Part	Material
1	Handle	ZG45
2	Upper cover	HT200
3	Upper bearing seat	HT200
4	Motor body	HT200
5	Oil chamber	HT200
6	Pump cover	HT200
7	Pump body	HT200
8	Impeller	HT200
9	Oil seal	
10	Mechanical seal	Upper:SiC/Carbon Lower:SiC/SiC
11	Bearing	
12	Rotor	
13	Stator	



### Package Information

Model	GW (kg)	L (mm)	W (mm)	H (mm)	Quantity (PCS/20'TEU)
80SWE40-9-2.2L	46.4	924	284	363	294
80SWE40-13-3L	53.8	874	284	363	316
80SWE40-18-4L	56.3	874	284	363	316





### Application

- Drainage of wastewater from the attenuation tank, purifying tank and sewage tank in water treatment plant
- Drainage of waste water containing fibrous additives from leather factory and food processing factory
- Sewage management, accumulated water, septic tank, stock farm
- Pumping sewage form hotels, restaurants, schools and public buildings

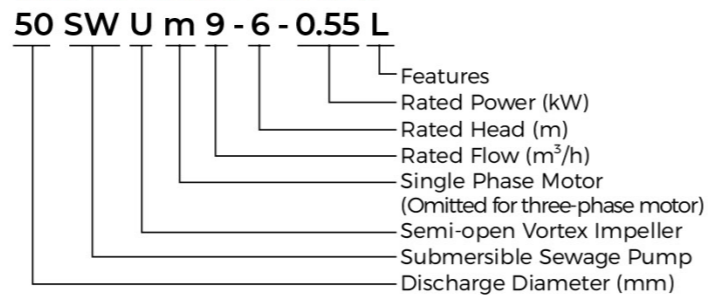
### Pump

- Semi-open vortex impeller, suitable for liquid containing impurities and long fiber substance
- Flexible installations with hoses, pipes or quick-coupling systems
- Float switch as standard accessory for single phase ( $\le 1.1\text{ kW}$ )
- Cable Length: 10m
- Double-end mechanical seal
- Stainless steel welded shaft
- Liquid temperature: 0 - 40 °C
- Liquid PH value: 4 - 10
- Max. immersion depth: 5 m

### Motor

- Frequency/Pole number: 50 Hz/2
- Insulation class: F
- Protection class: IP68
- Bearing: Ball type

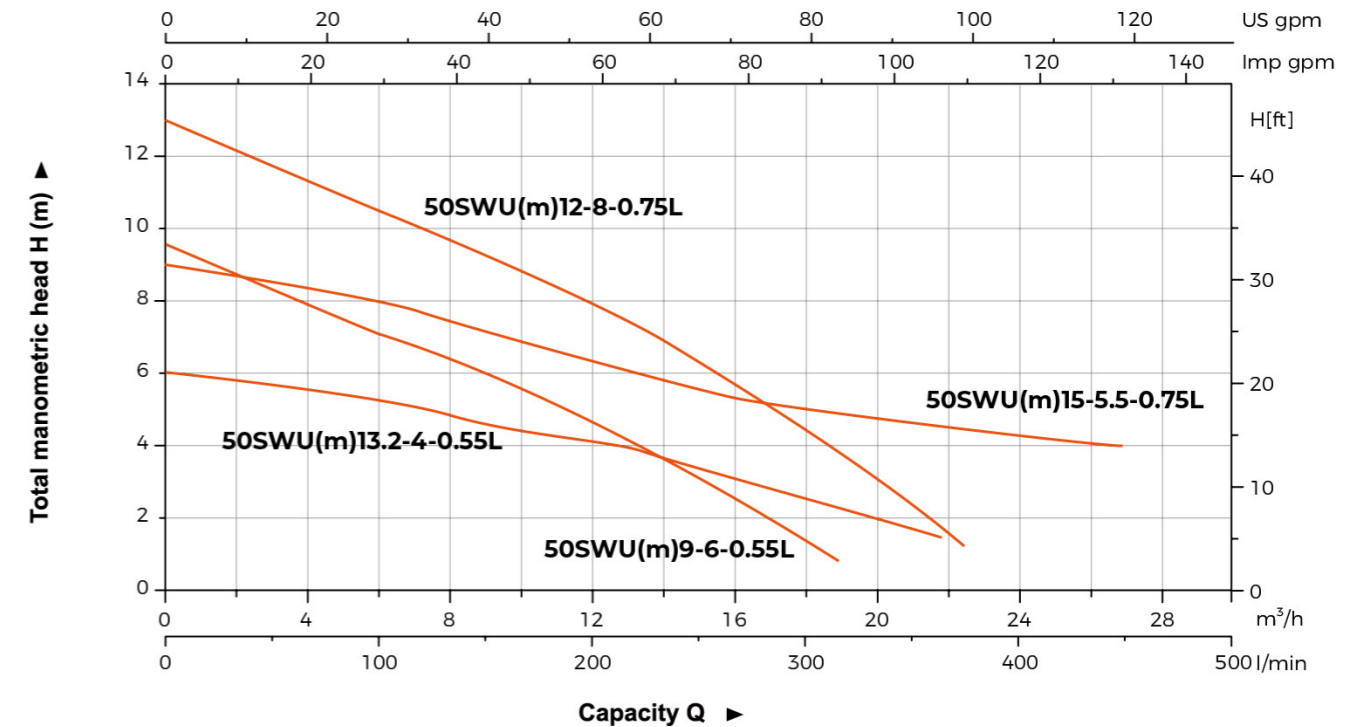
### Identification Codes



### Technical Data

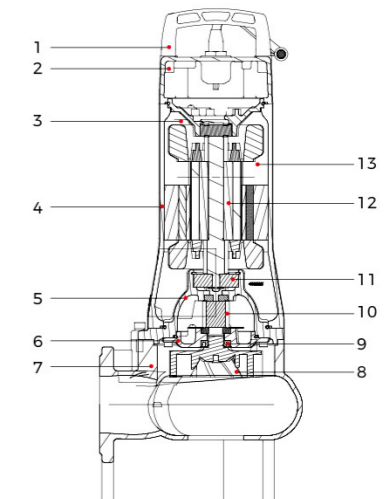
Model		Discharge	Power		Rated flow	Max. flow	Rated head	Max. head	Max. Solid Dia
Single Phase	Three Phase	mm (inch)	kW	HP	$\text{m}^3/\text{h}$	$\text{m}^3/\text{h}$	m	m	mm
50SWUm9-6-0.55L	50SWU9-6-0.55L	50 (2")	0.55	0.75	9	19	6	9.5	35
50SWUm13.2-4-0.55L	50SWU13.2-4-0.55L	50 (2")	0.55	0.75	13	22	4	6	50
50SWUm12-8-0.75L	50SWU12-8-0.75L	50 (2")	0.75	1	12	22.5	8	13	35
50SWUm15-5.5-0.75L	50SWU15-5.5-0.75L	50 (2")	0.75	1	15	27	5.5	9	50

### Hydraulic Performance Curves



### Materials Table

No.	Part	Material
1	Handle	ZG45
2	Upper cover	HT200
3	Upper bearing seat	HT200
4	Motor body	HT200
5	Oil chamber	HT200
6	Pump cover	HT200
7	Pump body	HT200
8	Impeller	HT200
9	Oil seal	
10	Mechanical seal	Upper: Sic/Carbon Lower: Sic/Sic
11	Bearing	
12	Rotor	
13	Stator	



### Dimension

Model	L1 (mm)	L2 (mm)	L3 (mm)	L4 (mm)	H (mm)	H1 (mm)	D (mm)	D1 (mm)	D2 (mm)	M (mm)
50SWU(m)9-6-0.55L	195	160	80	121	483	64	35	110	14	14
50SWU(m)13.2-4-0.55L	201	166	86		508	79	50			
50SWU(m)12-8-0.75L	195	160	80		483	64	35			
50SWU(m)15-5.5-0.75L	201	166	86		508	79	250			

### Package Information

Model	GW (kg)		L (mm)	W (mm)	H (mm)	Quantity (PCS/20' TEU)
	1~	3~				
50SWU(m)9-6-0.55L	24.6	23.9	746	254	286	544
50SWU(m)13.2-4-0.55L	25.1	24.3	746	254	286	544
50SWU(m)12-8-0.75L	25.9	25.2	746	254	286	544
50SWU(m)15-5.5-0.75L	26.4	25.6	746	254	286	544





Impeller

( Hose coupling as standard.  
Flange elbow is optional. )



### Application

- Drainage of wastewater from the attenuation tank, purifying tank and sewage tank in water treatment plant
- Drainage of waste water containing fibrous additives from leather factory and food processing factory
- Sewage management, accumulated water, septic tank, stock farm
- Pumping sewage form hotels, restaurants, schools and public buildings

### Pump

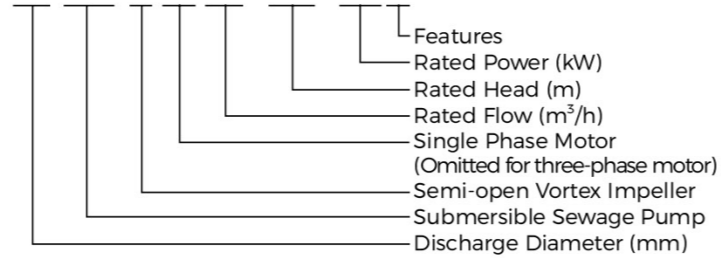
- Semi-open vortex impeller, suitable for liquid containing impurities and long fiber substance
- Flexible installations with hoses, pipes or quick-coupling systems
- Double-end mechanical seal
- Stainless steel welded shaft
- Liquid temperature: 0 - 40 °C
- Liquid PH value: 4 - 10
- Max. immersion depth: 5 m

### Motor

- Frequency/Pole number: 50 Hz/2
- Insulation class: F
- Protection class: IP68
- Bearing: Ball type

### Identification Codes

65 SW U m 24 - 8.5 - 1.5 L

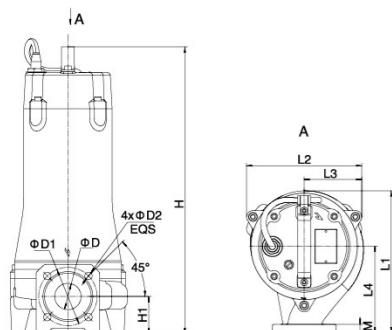


### Technical Data

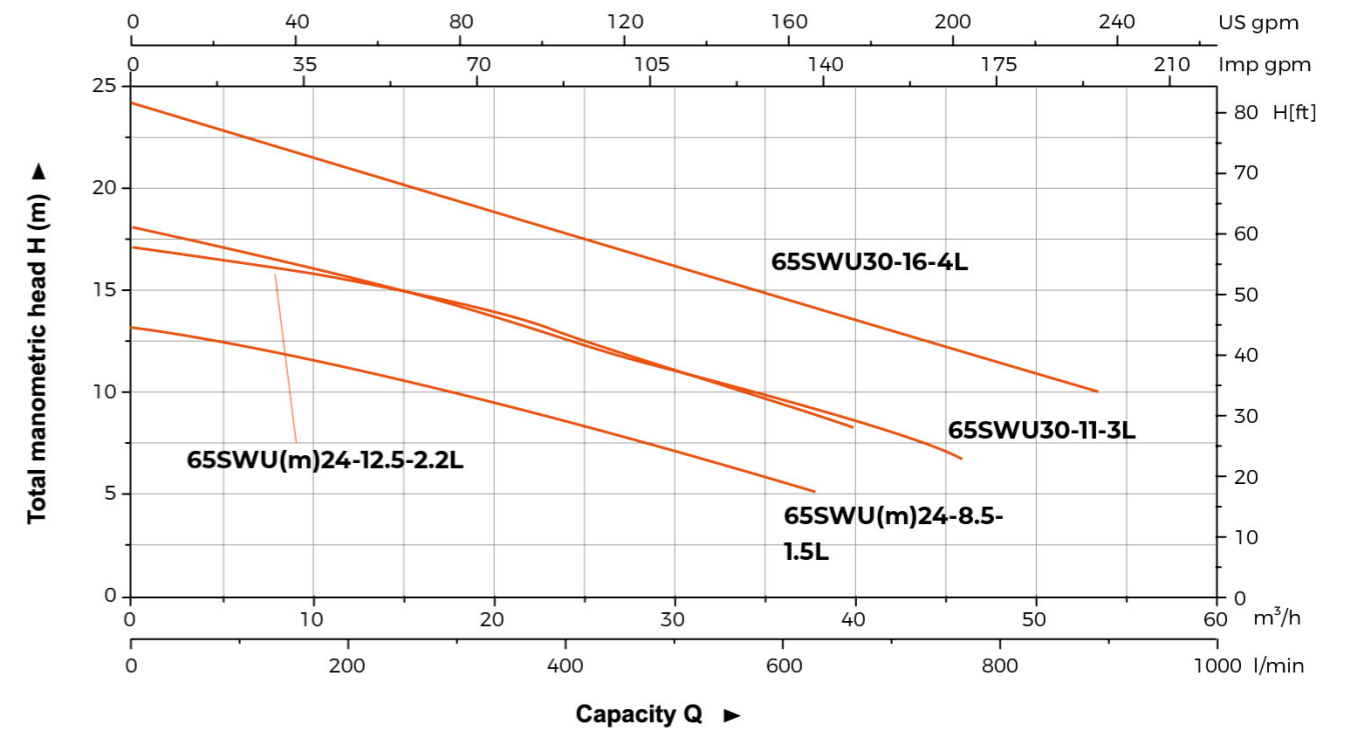
Model		Discharge	Power		Rated flow	Max. flow	Rated head	Max. head	Max. Solid Dia
Single Phase	Three Phase	mm (inch)	kW	HP	m <sup>3</sup> /h	m <sup>3</sup> /h	m	m	mm
65SWUm24-8.5-1.5L	65SWU24-8.5-1.5L	65 (2.5")	1.5	2	24	38	8.5	13	55
65SWUm24-12.5-2.2L	65SWU24-12.5-2.2L	65 (2.5")	2.2	3	24	40	12.5	17	55
-	65SWU30-11-3L	65 (2.5")	3	4	30	46	11	18	55
-	65SWU30-16-4L	65 (2.5")	4	5.5	30	54	16	24	55

### Dimension

Model	L1 (mm)	L2 (mm)	L3 (mm)	L4 (mm)	H (mm)		H1 (mm)	D (mm)	D1 (mm)	D2 (mm)	M (mm)
					1~	3~					
65SWU(m)24-8.5-1.5L	266	218	110	167	483	590	91	65	130	14	16
65SWU(m)24-12.5-2.2L					508	590					
65SWU30-11-3L					-	621					
65SWU30-16-4L					-	621					

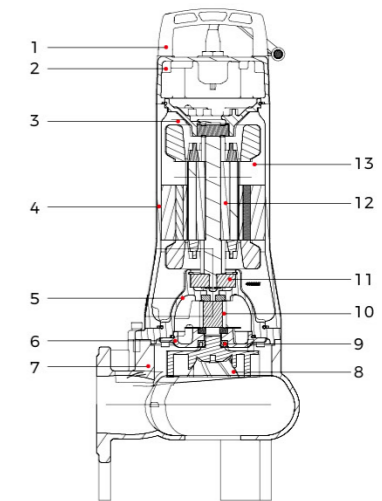


### Hydraulic Performance Curves



### Materials Table

No.	Part	Material
1	Handle	ZG45
2	Upper cover	HT200
3	Upper bearing seat	HT200
4	Motor body	HT200
5	Oil chamber	HT200
6	Pump cover	HT200
7	Pump body	HT200
8	Impeller	HT200
9	Oil seal	
10	Mechanical seal	Upper: Sic/Carbon Lower: Sic/Sic
11	Bearing	
12	Rotor	
13	Stator	



### Package Information

Model	GW (kg)		L (mm)	W (mm)	H (mm)	Quantity (PCS/20'TEU)
	1~	3~				
65SWU(m)24-8.5-1.5L	48.8	45	924	284	363	294
65SWU(m)24-12.5-2.2L	49	47.2	924	284	363	294
65SWU30-11-3L	-	54.5	874	284	363	316
65SWU30-16-4L	-	56.7	874	284	363	316





Impeller

( Hose coupling as standard.  
Flange elbow is optional. )

### Application

- Drainage of wastewater from the attenuation tank, purifying tank and sewage tank in water treatment plant
- Drainage of waste water containing fibrous additives from leather factory and food processing factory
- Sewage management, accumulated water, septic tank, stock farm
- Pumping sewage form hotels, restaurants, schools and public buildings

### Pump

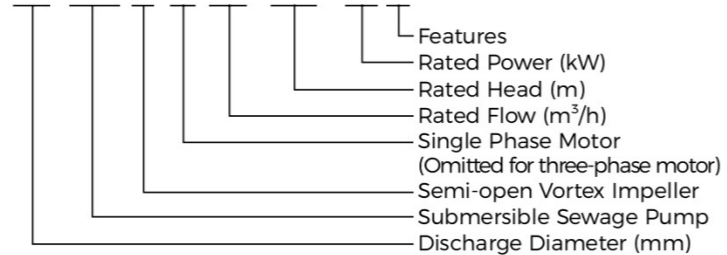
- Semi-open vortex impeller, suitable for liquid containing impurities and long fiber substance
- Flexible installations with hoses, pipes or quick-coupling systems
- Double-end mechanical seal
- Stainless steel welded shaft
- Liquid temperature: 0 - 40 °C
- Liquid PH value: 4 - 10
- Max. immersion depth: 5 m

### Motor

- Frequency/Pole number: 50 Hz/2
- Insulation class: F
- Protection class: IP68
- Bearing: Ball type

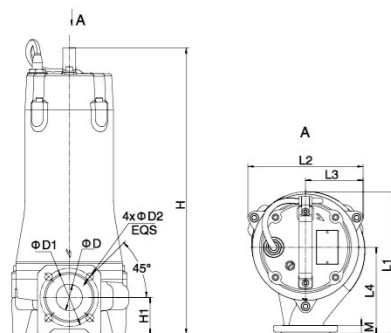
### Identification Codes

80 SW U m 30 -4.5 -1.5 L



### Technical Data

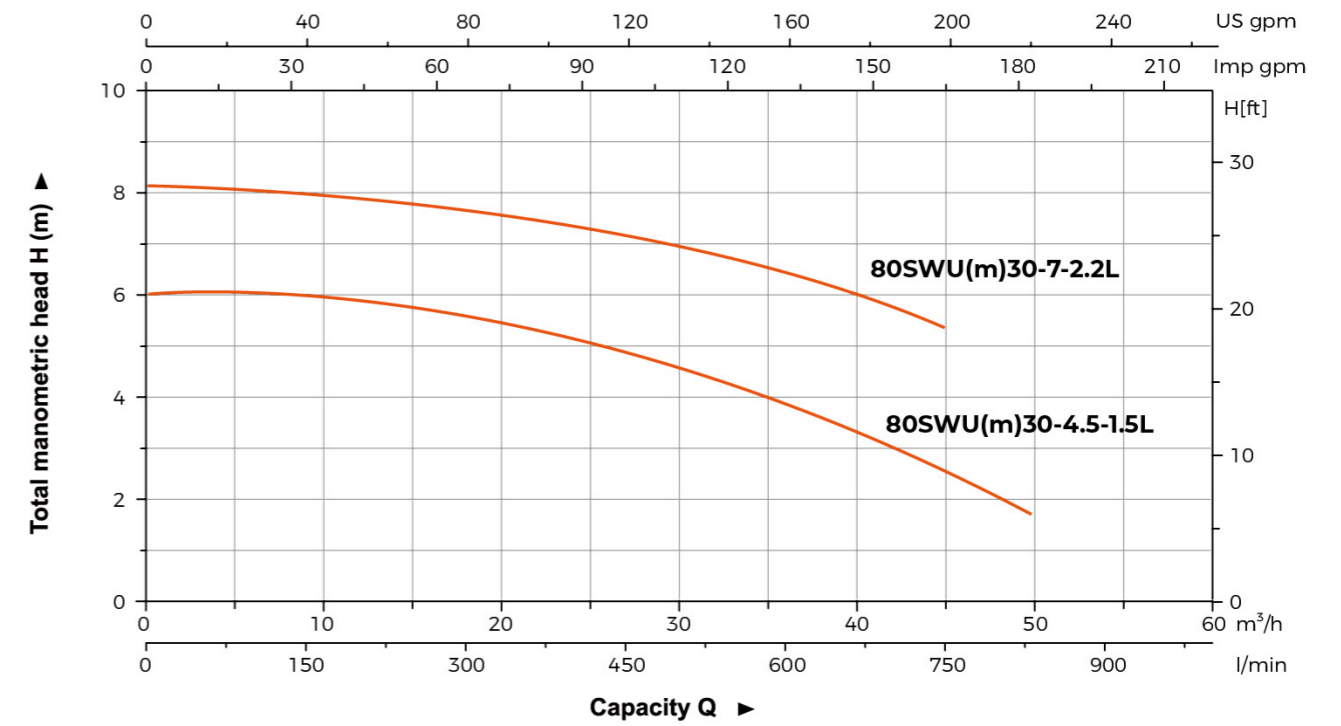
Model		Discharge	Power		Rated flow	Max. flow	Rated head	Max. head	Max. Solid Dia
Single Phase	Three Phase	mm (inch)	kW	HP	m <sup>3</sup> /h	m <sup>3</sup> /h	m	m	mm
80SWUm30-4.5-1.5L	80SWU30-4.5-1.5L	80(3")	1.5	2	30	50	4.5	6	76
80SWUm30-7-2.2L	80SWU30-7-2.2L	80(3")	2.2	3	30	45	7	8	76



### Dimension

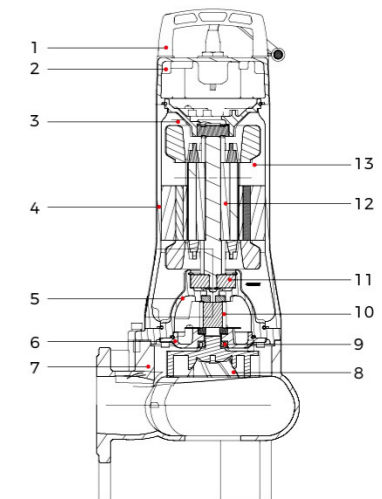
Model	L1 (mm)	L2 (mm)	L3 (mm)	L4 (mm)	H (mm)		H1 (mm)	D (mm)	D1 (mm)	D2 (mm)	M (mm)
					1~	3~					
80SWU(m)30-4.5-1.5L	260	224	118	149	672	631	122	75	150	18	18
80SWU(m)30-7-2.2L											

### Hydraulic Performance Curves



### Materials Table

No.	Part	Material
1	Handle	ZG45
2	Upper cover	HT200
3	Upper bearing seat	HT200
4	Motor body	HT200
5	Oil chamber	HT200
6	Pump cover	HT200
7	Pump body	HT200
8	Impeller	HT200
9	Oil seal	
10	Mechanical seal	Upper:Sic/Carbon Lower:Sic/Sic
11	Bearing	
12	Rotor	
13	Stator	



### Package Information

Model	GW (kg)		L (mm)	W (mm)	H (mm)	Quantity (PCS/20' TEU)
	1~	3~				
80SWU(m)30-4.5-1.5L	49.1	45.4	924	284	363	294
80SWU(m)30-7-2.2L	49.4	47.5	924	284	363	294





### Application

- Used In pressure sewage system
- Drainage of wastewater from individual residences, apartment buildings, recreational developments, models
- Transferring wastewater of commercial buildings, industrial plants, wastewater sampling, small hospitals
- Schools, federal, state and local parks, wastewater drainage
- To transfer various wastewater and sewage

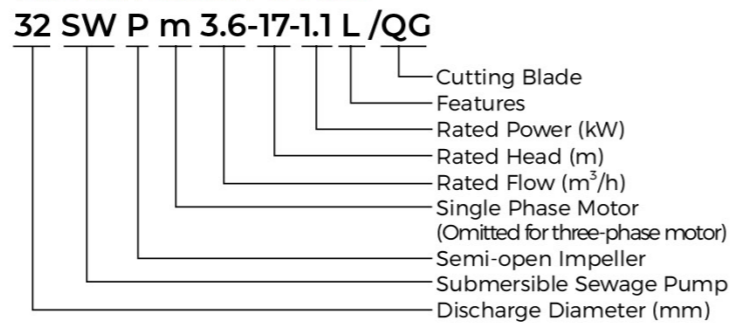
### Pump

- Semi-open vortex impeller & reliable grinding system
- Flexible installations with hoses, pipes or quick-coupling systems
- Float switch as standard accessory for single phase (≤1.1 kW)
- Cable Length: 10m
- Double-end mechanical seal
- Stainless steel welded shaft
- Liquid temperature: 0 - 40 °C
- Liquid PH value: 4 - 10
- Max. immersion depth: 5 m

### Motor

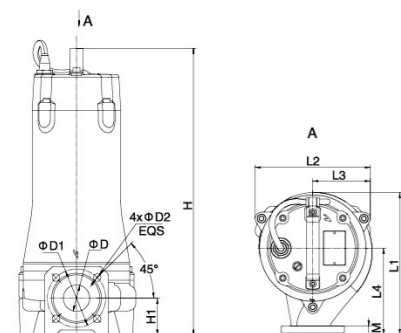
- Frequency/Pole number: 50 Hz/2
- Insulation class: F
- Protection class: IP68
- Bearing: Ball type

### Identification Codes



### Technical Data

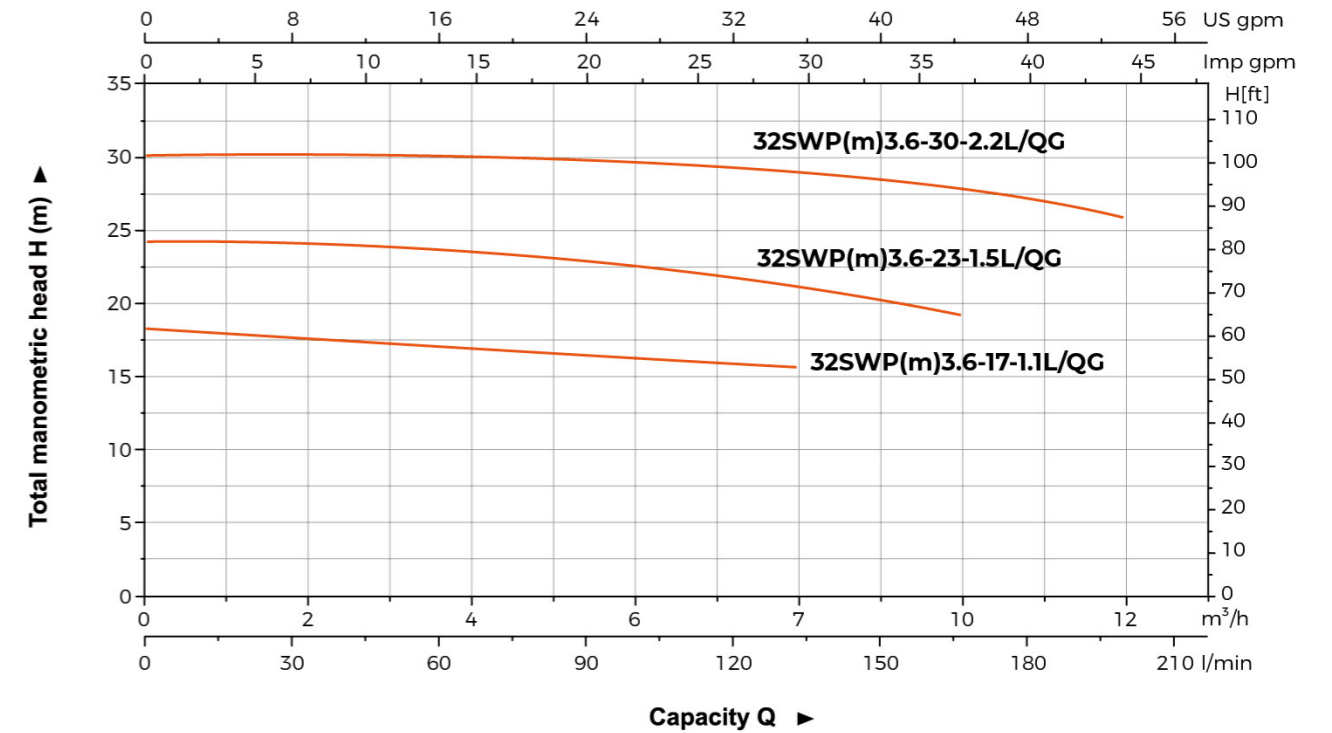
Model		Discharge	Power		Rated flow	Max. flow	Rated head	Max. head
Single Phase	Three Phase	mm (inch)	KW	HP	m <sup>3</sup> /h	m <sup>3</sup> /h	m	m
32SWPm3.6-17-1.1L/QG	32SWP3.6-17-1.1L/QG	32(1¼")	1.1	1.5	3.6	8	17	18
32SWPm3.6-23-1.5L/QG	32SWP3.6-23-1.5L/QG	32(1¼")	1.5	2	3.6	10	23	23.2
32SWPm3.6-30-2.2L/QG	32SWP3.6-30-2.2L/QG	32(1¼")	2.2	3	3.6	12	30	30.2



### Dimension

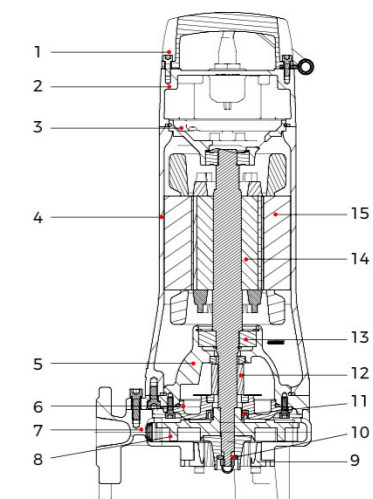
Model	L1 (mm)	L2 (mm)	L3 (mm)	L4 (mm)	H (mm)		H1 (mm)	D (mm)	D1 (mm)	D2 (mm)	M (mm)
					1~	3~					
32SWP(m)3.6-17-1.1L/QG	230	191	96	140	473	473	73	32	90	14	16
32SWP(m)3.6-23-1.5L/QG					564	523					
32SWP(m)3.6-30-2.2L/QG					564	523					

### Hydraulic Performance Curves



### Materials Table

No.	Part	Material
1	Handle	ZG45
2	Upper cover	HT200
3	Upper bearing seat	HT200
4	Motor body	HT200
5	Oil chamber	HT200
6	Pump cover	HT200
7	Pump body	HT200
8	Impeller	HT200
9	Cutting ring	108Cr17
10	Radial cutter	108Cr17
11	Oil seal	
12	Mechanical seal	Upper:SiC/Carbon Lower:SiC/SiC
13	Bearing	
14	Rotor	
15	Stator	



### Package Information

Model	GW (kg)		L (mm)	W (mm)	H (mm)	Quantity (PCS/20TEU)
	1~	3~				
32SWP(m)3.6-17-1.1L/QG	34	32.1	749	289	368	354
32SWP(m)3.6-23-1.5L/QG	41.5	38.4	924	284	363	294
32SWP(m)3.6-30-2.2L/QG	41.1	41.6	924	284	363	294





### Application

- Used In pressure sewage system
- Drainage of wastewater from individual residences, apartment buildings, recreational developments, models
- Transferring wastewater of commercial buildings, industrial plants, wastewater sampling, small hospitals
- Schools, federal, state and local parks, wastewater drainage
- To transfer various wastewater and sewage

### Pump

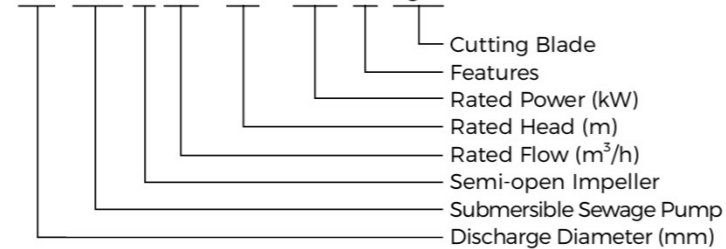
- Semi-open vortex impeller & reliable grinding system
- Flexible installations with hoses, pipes or quick-coupling systems
- Cable Length: 10m
- Double-end mechanical seal
- Stainless steel welded shaft
- Liquid temperature: 0 - 40 °C
- Liquid PH value: 4 - 10
- Max. immersion depth: 5 m

### Motor

- Frequency/Pole number: 50 Hz/2
- Insulation class: F
- Protection class: IP68
- Bearing: Ball type

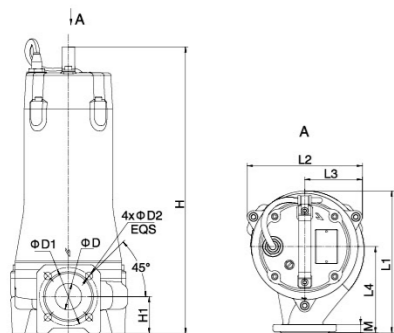
### Identification Codes

50 SW P 12 - 19 - 2.2 L/QG



### Technical Data

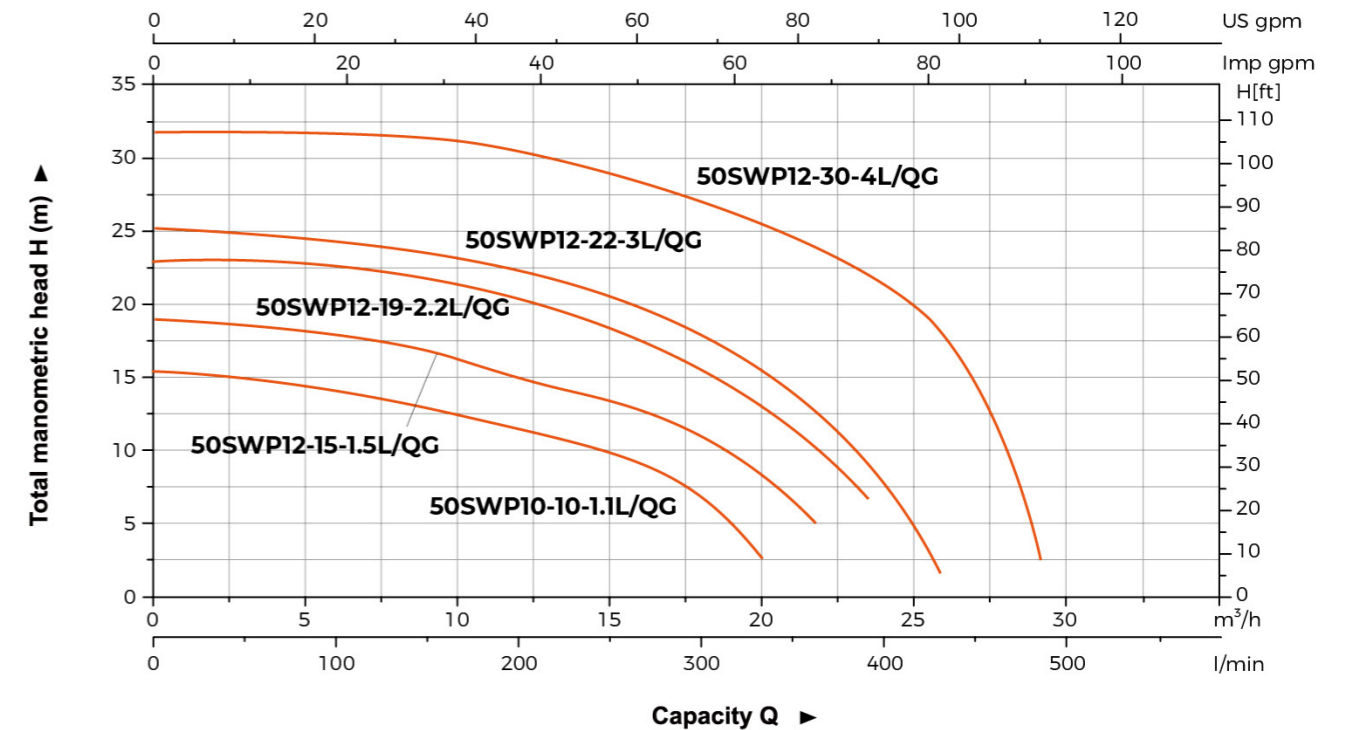
Model	Discharge mm (inch)	Power		Rated flow m³/h	Max. flow m³/h	Rated head m	Max. head m
		kW	HP				
50SWP10-10-1.1L/QG	50 (2")	1.1	1.5	10	20.5	10	17.5
50SWP12-15-1.5L/QG	50 (2")	1.5	2	12	21.5	15	19.5
50SWP12-19-2.2L/QG	50 (2")	2.2	3	12	24.5	19	23
50SWP12-22-3L/QG	50 (2")	3	4	12	26	22	25.5
50SWP12-30-4L/QG	50 (2")	4	5.5	12	26.5	30	33



### Dimension

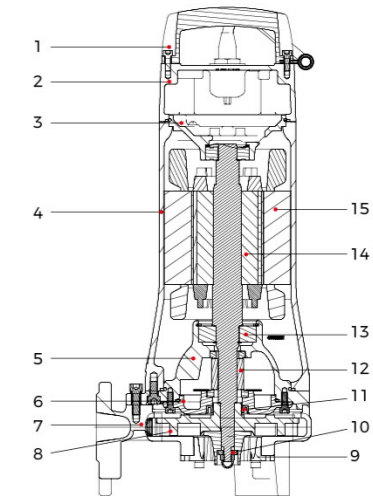
Model	L1 (mm)	L2 (mm)	L3 (mm)	L4 (mm)	H (mm)	H1 (mm)	D (mm)	D1 (mm)	D2 (mm)	M (mm)
50SWP10-10-1.1L/QG	245.5	217	109	145	472.5	73	40	100	14	16
50SWP12-15-1.5L/QG					523					
50SWP12-19-2.2L/QG	246	217	109	145	554	73	40	100	14	16
50SWP12-22-3L/QG										
50SWP12-30-4L/QG										

### Hydraulic Performance Curves



### Materials Table

No.	Part	Material
1	Handle	ZG45
2	Upper cover	HT200
3	Upper bearing seat	HT200
4	Motor body	HT200
5	Oil chamber	HT200
6	Pump cover	HT200
7	Pump body	HT200
8	Impeller	HT200
9	Cutting ring	108Cr17
10	Radial cutter	108Cr17
11	Oil seal	
12	Mechanical seal	Upper:Sic/Carbon Lower:Sic/Sic
13	Bearing	
14	Rotor	
15	Stator	



### Package Information

Model	GW (kg)	L (mm)	W (mm)	H (mm)	Quantity (PCS/20'TEU)
50SWP10-10-1.1L/QG	39.7	749	289	368	354
50SWP12-15-1.5L/QG	46.8	924	284	363	294
50SWP12-19-2.2L/QG	45.2	924	284	363	294
50SWP12-22-3L/QG	51.5	874	284	363	316
50SWP12-30-4L/QG	53.9	874	284	363	316





### Application

- Wastewater drainage in factories, construction sites and commercial facilities
- Drainage system in municipal sewage treatment plants
- Drainage station in residential quarters
- Municipal projects
- Methane pools and field irrigation in countryside

### Pump

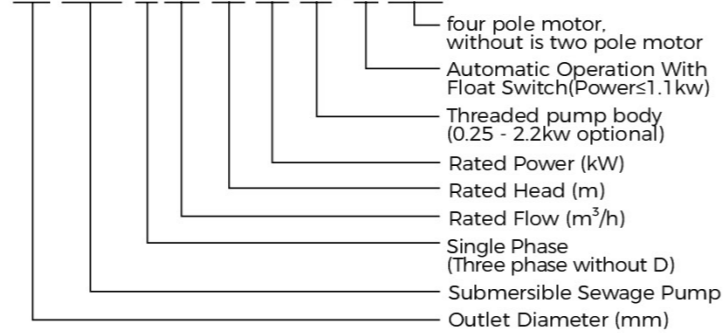
- Max. immersion depth: 5 m
- 0.25-4kw, Standard PN6 pump body with hose coupling
- 5.5-7.5kw, Standard PN6 pump body with hose coupling, optional PN10 pump body, without hose coupling
- 11-22kW, Standard PN10 pump body, without hose coupling, optional PN6 pump body with hose coupling
- Can be equipped with hose connection can choose flange connection
- Cable Length: 10m (under 30kW), 8m (30-45kW)
- Max. liquid temperature: up to +40°C
- Liquid PH value: 4 - 10
- Max.liquid density:  $1.3 \times 10^3 \text{ kg/m}^3$
- Allowed by the particle diameter: 20 - 80 mm
- Single phase optional

### Motor

- Copper winding
- Insulation class: F
- Protection class: IP68
- Motor protection: 0.25 - 4kW(5.5kW and above need control cabinet)
- 0.25-4kW: Star connection; 5.5-37kW: Delta connection; 45kW: Star-triangle connection

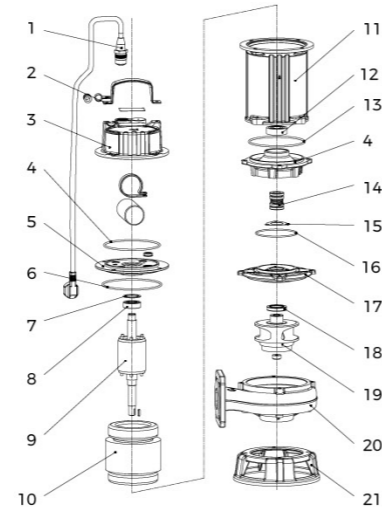
### Identification Codes

**65 WQ D 15-10-1.1(M)(A)/(4)**



### Materials Table

No.	Part	Material	No.	Part	Material
01	Cable		12	Bearing	
02	Handle	AISI 304	13	Oil Chamber	HT200
03	Top Cover	HT200	14	Mechanical Seal	
04	O-Ring	NBR	15	Pressing	AISI 304
05	End Cover	HT200	16	O-Ring	NBR
06	O-Ring	NBR	17	Cylinder Head	HT200
07	Wave Spring Washer	65Mn	18	Oil Seal	
08	Bearing		19	Impeller	HT200
09	Rotor		20	Pump Body	HT200
10	Stator		21	Base	HT200
11	Motor Casing	HT200			

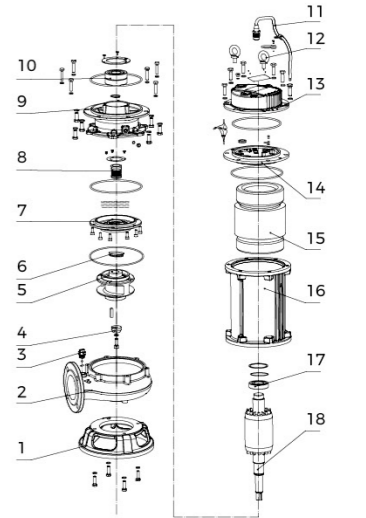


0.25 - 4 kW

### Materials Table

No.	Part	Material
01	Pedestal	HT200
02	Pump body	HT200
03	Air vent valve	
04	Washer	304
05	Impeller	HT200
06	Casket seal	NBR
07	Cylinder Head	HT200
08	Mechanical seals	
09	Oil chamber	HT200
10	Ball bearing	
11	Cable assembly	
12	Rings	
13	Top cover	HT200
14	End cover	HT200

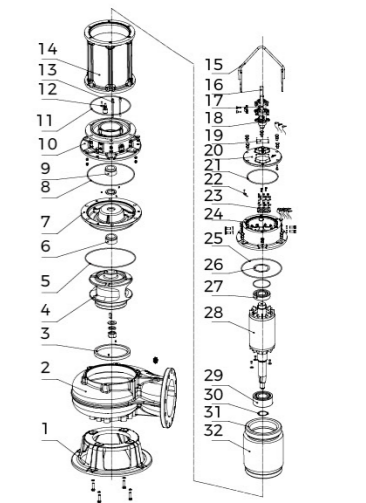
No.	Part	Material
15	Winding	
16	Mechine barrel	HT200
17	Ball bearing	
18	Motor	



5.5 - 7.5 kW

No.	Part	Material
01	Pump base	HT200
02	Pump body	HT200/HT250/QT400
03	Impeller ring	45
04	Impeller	HT200/HT250/QT400
05	O-ring	NBR
06	Mechanical seal	Silicon/Carbon
07	Pump cover	HT200
08	O-ring	NBR
09	Mechanical seal	Silicon/Carbon
10	Oil chamber	HT200
11	O-ring	NBR
12	Float switch (optional)	304
13	Oil-water probe (optional)	304
14	Motor base	HT200
15	Handle components	Q235
16	Cable assembly	YCW
17	Cable clamp	HT200

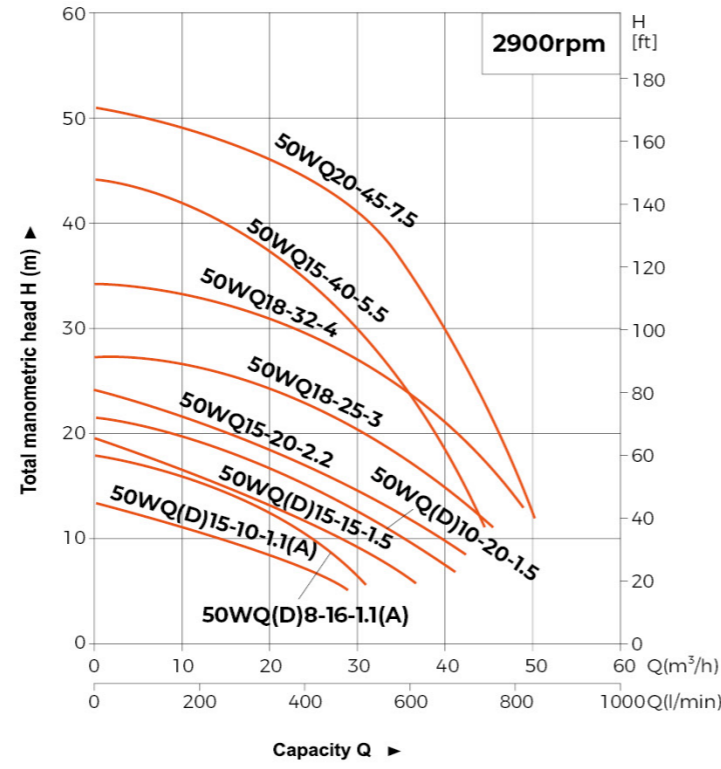
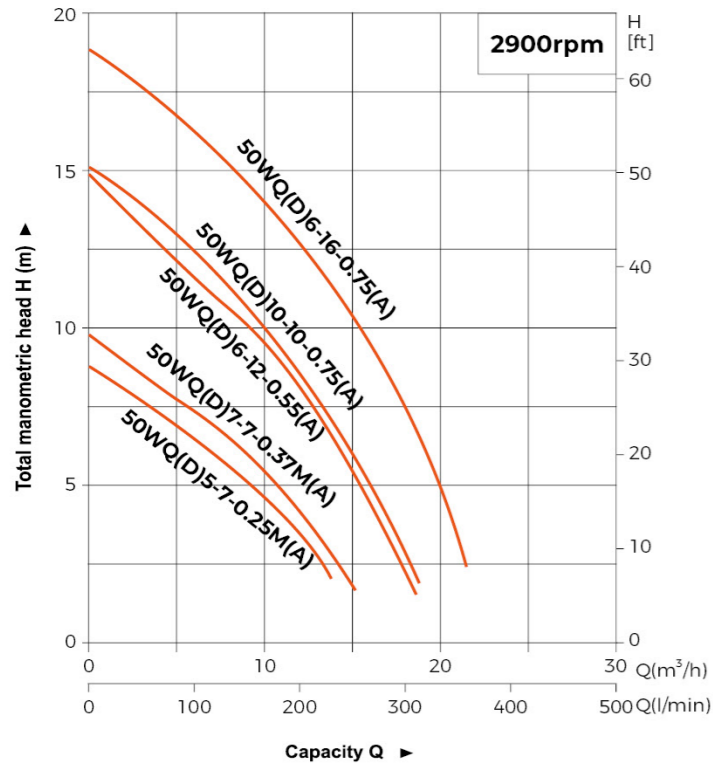
No.	Part	Material
18	Signal line (optional)	YCW
19	Nameplate	304
20	Top cover	HT200
21	O-ring	NBR
22	Water leakage protection(optional)	
23	Wiring base	
24	Upper cover	HT200
25	O-ring	NBR
26	Wave spring	65Mn
27	Ball bearing	
28	Rotor	
29	Bearing	
30	Snap ring	65Mn
31	Temperature sensor(optional)	
32	Stator	



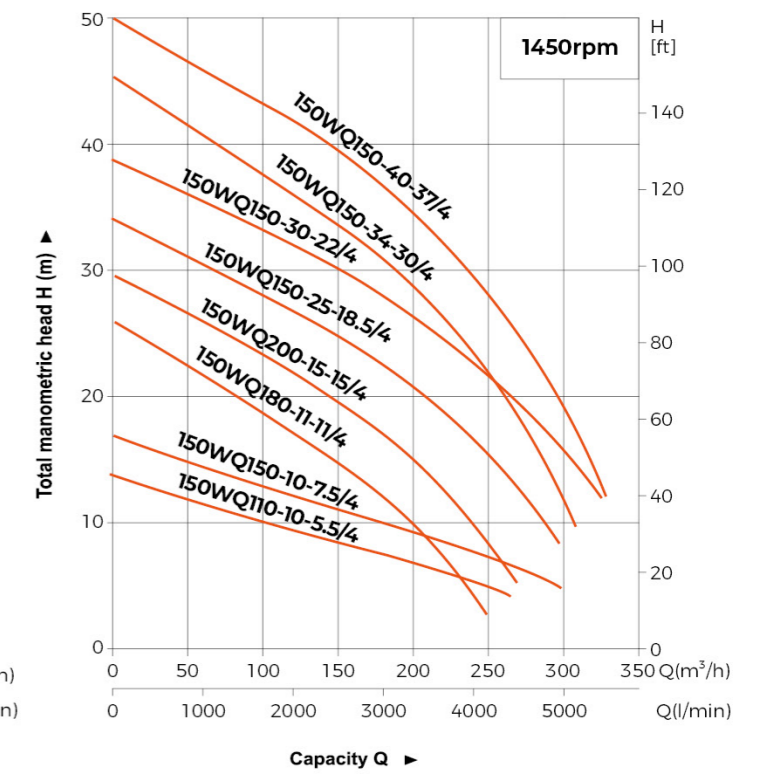
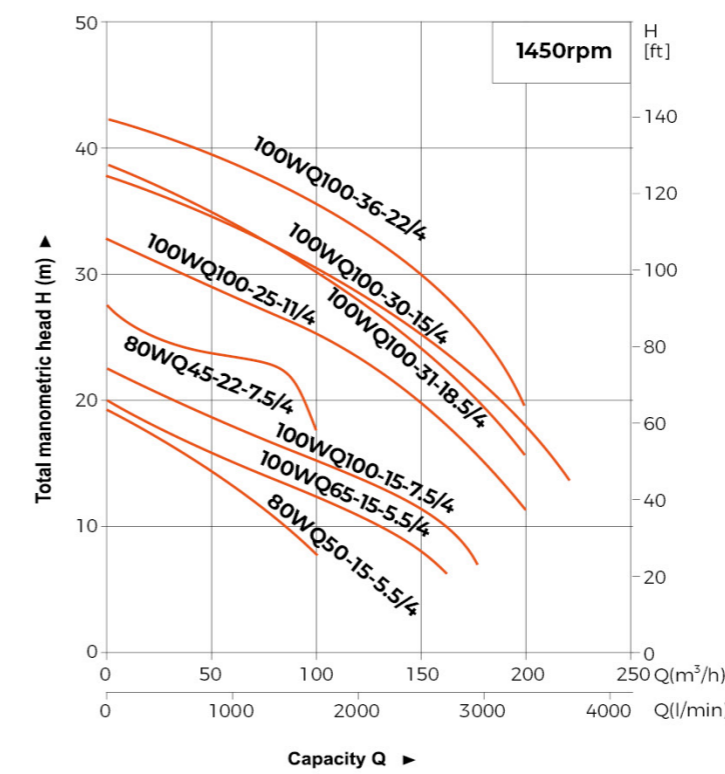
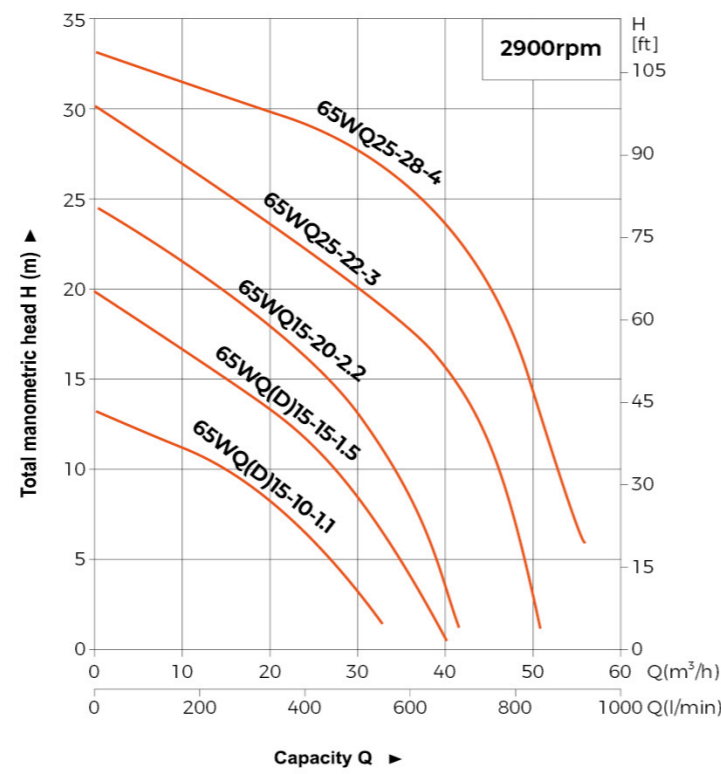
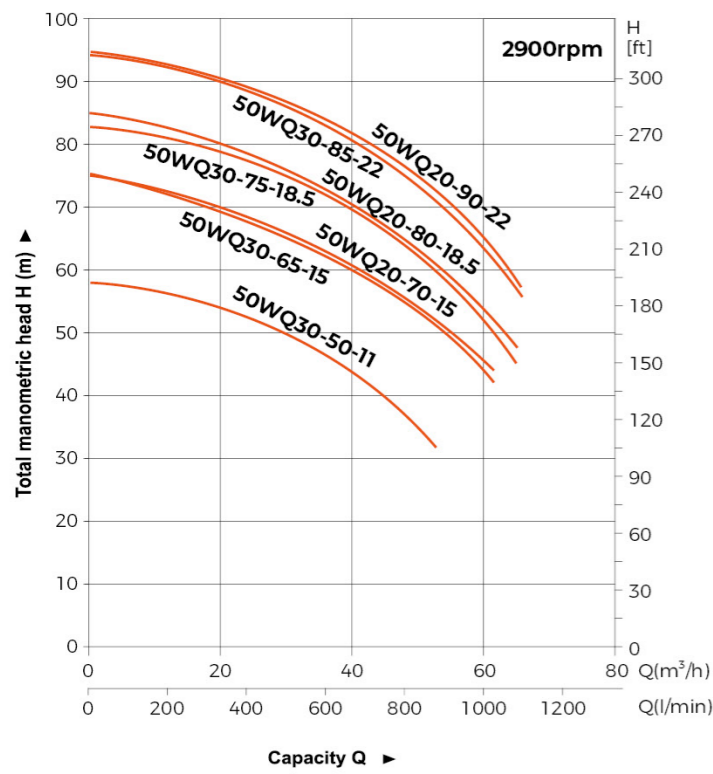
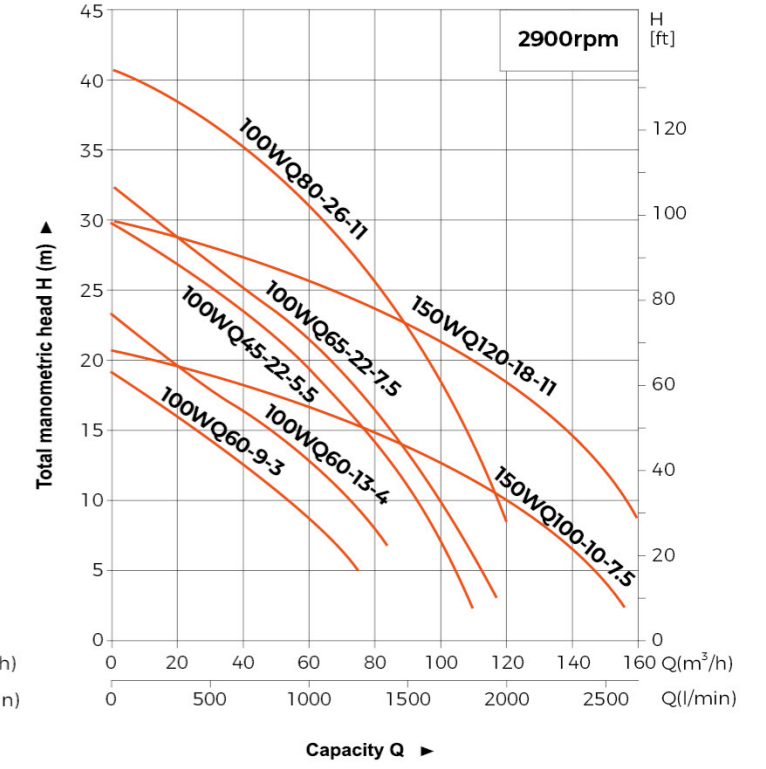
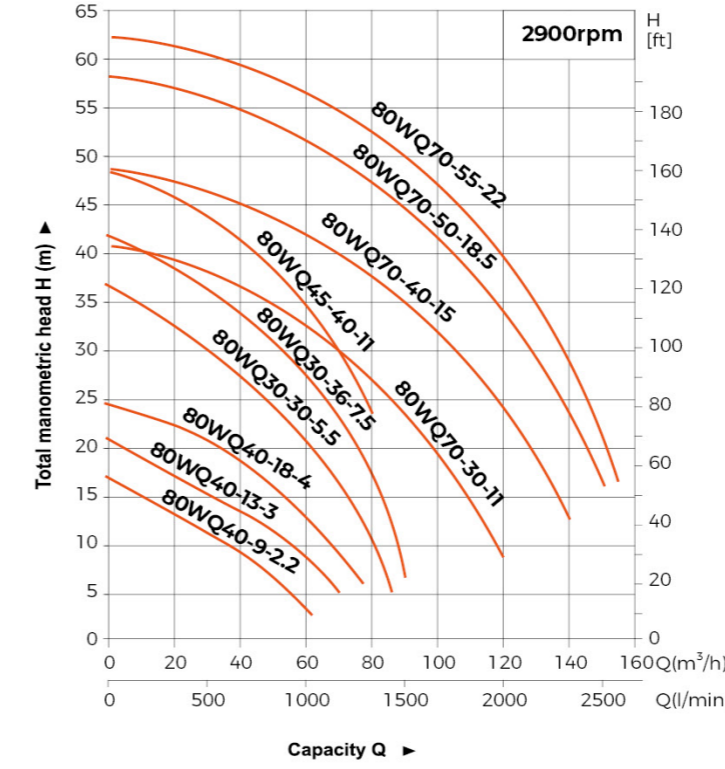
11 - 45 kW



### Hydraulic Performance Curves

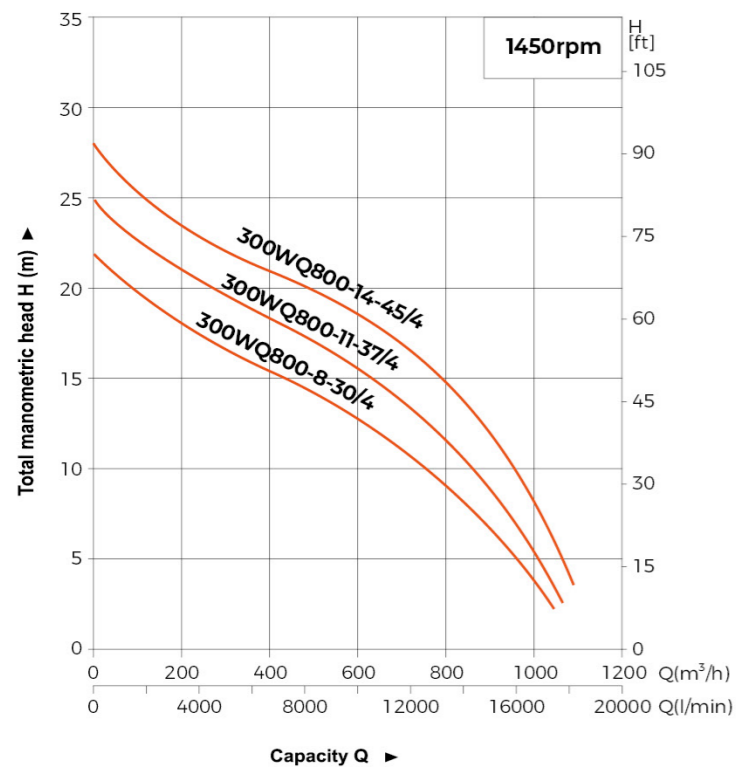
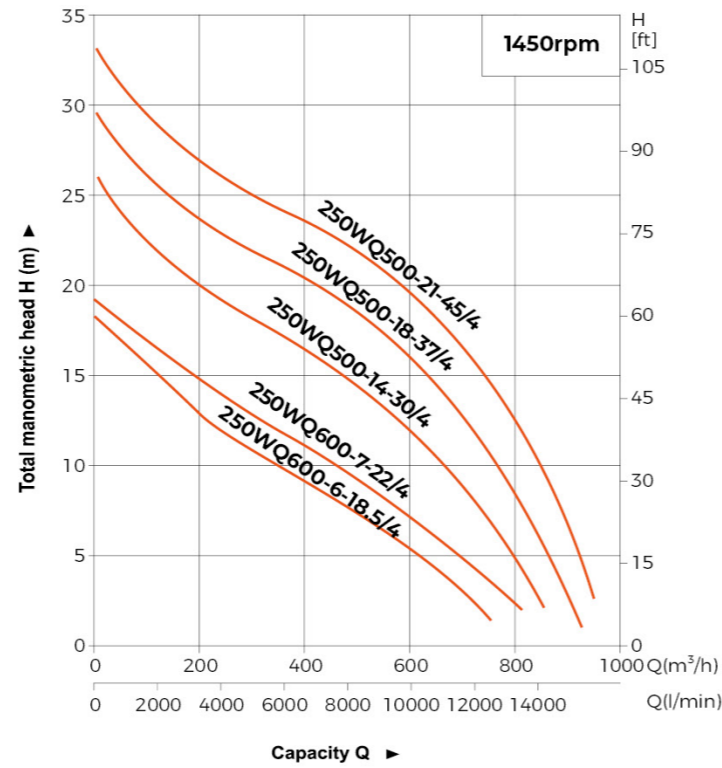
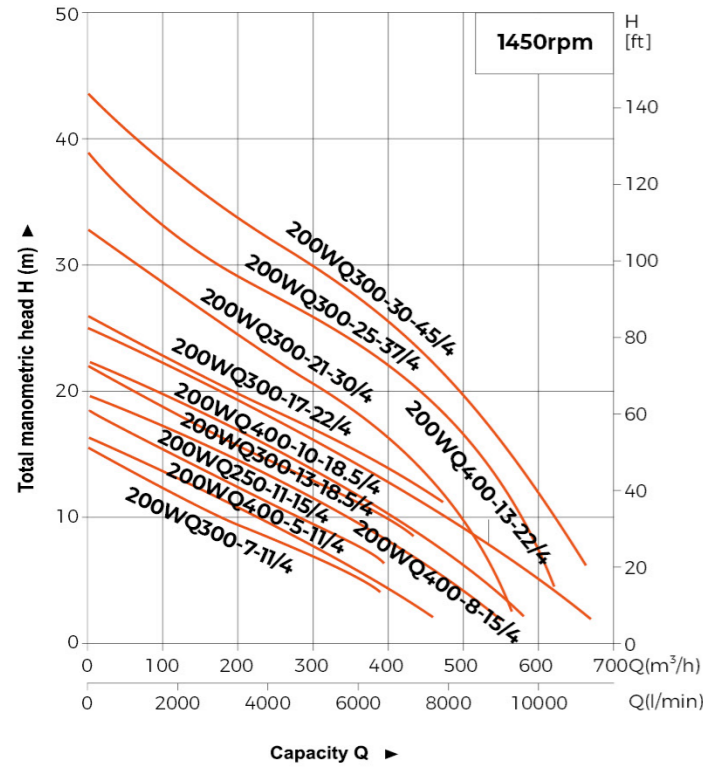


### Hydraulic Performance Curves





**Hydraulic Performance Curves**



**Technical Data**

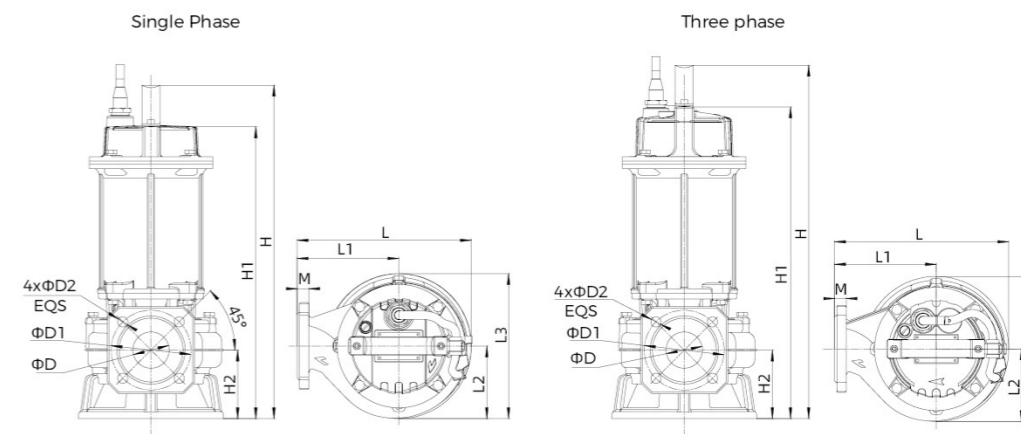
Model	Voltage	Speed	Max. Flow	Max. Head	Motor Power		Discharge	Guide Rail Fitting	Max. Solid Dia	N.W	G.W	Packing Dimension
	V	r.p.m	m³/h	m	kW	HP						
50WQ5-7-0.25M	380	2900	14	8	0.25	0.33	2"	50-50	20	15.3	22.9	579x235x224
50WQD5-7-0.25M(A)	220	2900	14	8	0.25	0.33	2"	50-50	20	16	23.6	579x235x224
50WQ7-7-0.37M	380	2900	15	10	0.37	0.55	2"	50-50	20	15.4	23.1	579x235x224
50WQD7-7-0.37M(A)	220	2900	15	10	0.37	0.55	2"	50-50	20	16.1	23.7	579x235x224
50WQ6-12-0.55	380	2900	19	15	0.55	0.75	2"	50-50	20	16.5	24.1	579x235x224
50WQD6-12-0.55(A)	220	2900	19	15	0.55	0.75	2"	50-50	20	16.7	24.3	579x235x224
50WQ6-16-0.75	380	2900	22	19	0.75	1	2"	50-50	20	17.2	24.8	579x235x224
50WQD6-16-0.75(A)	220	2900	22	19	0.75	1	2"	50-50	20	17.7	25.3	579x235x224
50WQ10-10-0.75	380	2900	19	15	0.75	1	2"	50-50	20	17	24.6	579x235x224
50WQD10-10-0.75(A)	220	2900	19	15	0.75	1	2"	50-50	20	17.5	25.1	579x235x224
50WQ8-16-1.1	380	2900	30	19	1.1	1.5	2"	50-50	25	29.9	38.6	586x269x261
50WQD8-16-1.1(A)	220	2900	30	19	1.1	1.5	2"	50-50	25	25.6	34.4	586x269x261
50WQ15-10-1.1	380	2900	27	12.5	1.1	1.5	2"	50-50	25	29.5	38.2	586x269x261
50WQD15-10-1.1(A)	220	2900	27	12.5	1.1	1.5	2"	50-50	25	25.2	33.9	586x269x261
65WQ15-10-1.1	380	2900	31.5	13	1.1	1.5	2 1/2"	65-65	25	36.2	48	735x275x340
65WQD15-10-1.1(A)	220	2900	31.5	13	1.1	1.5	2 1/2"	65-65	25	38.6	50.5	735x275x340
50WQ10-20-1.5	380	2900	33	21.5	1.5	2	2"	50-50	25	24.3	33.1	586x269x261
50WQD10-20-1.5	220	2900	33	21.6	1.5	2	2"	50-50	25	25.8	34.6	646x269x261
50WQ15-15-1.5	380	2900	32	18.5	1.5	2	2"	50-50	25	24	32.7	586x269x261
50WQD15-15-1.5	220	2900	32	18.5	1.5	2	2"	50-50	25	25.7	34.5	646x269x261
65WQ15-15-1.5	380	2900	39.7	20	1.5	2	2 1/2"	65-65	25	26.3	35.1	544x269x244
65WQD15-15-1.5	220	2900	39.7	20	1.5	2	2 1/2"	65-65	25	30.1	38.8	604x269x244
50WQ15-20-2.2	380	2900	36	24	2.2	3	2"	50-50	20	30.1	38.8	646x269x261
65WQ15-20-2.2	380	2900	41.6	24.6	2.2	3	2 1/2"	65-65	25	30.7	39.6	604x269x244
80WQ40-9-2.2	380	2900	63	17	2.2	3	3"	80-80	30	31.2	44.9	876x269x261
50WQ18-25-3	380	2900	42	29	3	4	2"	50-50	20	43.4	53	784x324x289
65WQ25-22-3	380	2900	50	29	3	4	2 1/2"	65-65	25	44	55.8	784x324x289
80WQ40-13-3	380	2900	70	20	3	4	3"	80-80	30	44.8	58.7	784x324x289
100WQ60-9-3	380	2900	75	16	3	4	4"	100-100	30	46.8	63.3	784x324x289
50WQ18-32-4	380	2900	45	36	4	5.5	2"	50-50	20	46.2	55.7	784x324x289
65WQ25-28-4	380	2900	51	31.5	4	5.5	2 1/2"	65-65	25	46.8	58.5	784x324x289
80WQ40-18-4	380	2900	79	21	4	5.5	3"	80-80	30	47.4	61.3	784x324x289
100WQ60-13-4	380	2900	85	20	4	5.5	4"	100-100	30	49.6	66.1	784x324x289
50WQ15-40-5.5	380	2900	30	44	5.5	7.5	2"	50-50	20	94	113	430x360x1032
80WQ30-30-5.5	380	2900	70	35	5.5	7.5	3"	80-80	30	93	112.1	954x404x437
80WQ50-15-5.5/4	380	1450	70	25	5.5	7.5	3"	80-80	30	145	173	550x450x1127
100WQ45-22-5.5	380	2900	100	28	5.5	7.5	4"	100-100	30	93	112.1	954x404x437
100WQ65-15-5.5/4	380	1450	120	18	5.5	7.5	4"	100-100	55	145	173.1	1154x549x532
150WQ110-10-5.5/4	380	1450	260	12	5.5	7.5	6"	150-150	75	155	183.1	1154x549x532
50WQ20-45-7.5	380	2900	45	50	7.5	10	2"	50-50	20	108	125	1054x399x439
80WQ30-36-7.5	380	2900	75	41	7.5	10	3"	80-80	30	109	127	1054x399x439
100WQ65-22-7.5	380	2900	108	31	7.5	10	4"	100-100	35	118	137.1	1059x414x469
150WQ100-10-7.5	380	2900	150	20	7.5	10	6"	150-150	35	120	139.1	1059x414x469
80WQ45-22-7.5/4	380	1450	80	26	7.5	10	3"	80-80	30	150	166.8	1127x550x450
100WQ100-15-7.5/4	380	1450	140	21	7.5	10	4"	100-100	55	150	178.1	1154x549x532



### Technical Data

Model	Voltage	Speed	Max. Flow	Max. Head	Motor Power		Discharge	Guide Rlal Fitting	Max. Solid Dia	N.W	G.W	Packing Dimension
	V	r.p.m	m <sup>3</sup> /h	m	kW	HP	in		mm	kg	kg	mm
150WQ150-10-7.5/4	380	1450	300	16	7.5	10	6"	150-150	75	160	188.1	1154x549x532
50WQ20-55-11	380	2900	45	60.5	11	15	2"	50-50	25	136	156	1040x420x477
50WQ30-50-11	380	2900	45	60.5	11	15	2"	50-50	25	136	156	1040x420x477
80WQ45-40-11	380	2900	60	50.5	11	15	3"	80-80	30	131	151	1040x420x477
80WQ70-30-11	380	2900	100	40.5	11	15	3"	80-80	30	137	157	1040x420x477
100WQ80-26-11	380	2900	120	42	11	15	4"	100-100	35	132	152	1040x420x477
100WQ100-25-11/4	380	1450	190	31	11	15	4"	100-100	50	252.5	274.5	616x520x1388
150WQ120-18-11	380	2900	160	30	11	15	6"	150-150	55	137	157	1040x420x477
150WQ180-11-11/4	380	1450	260	24	11	15	6"	150-150	60	264	286	616x520x1388
200WQ300-7-11/4	380	1450	450	17	11	15	8"	200-200	70	285	314	716x620x1488
200WQ400-5-11/4	380	1450	470	18	11	15	8"	200-200	55	285	314	716x620x1488
50WQ20-70-15	380	2900	45	75.5	15	20	2"	50-50	25	150	170	1040x420x477
50WQ30-65-15	380	2900	45	75.5	15	20	2"	50-50	25	150	170	1040x420x477
80WQ70-40-15	380	2900	100	49.5	15	20	3"	80-80	30	149	169	1040x420x477
100WQ100-30-15/4	380	1450	210	35	15	20	4"	100-100	50	273	295	616x520x1388
150WQ200-15-15/4	380	1450	290	29	15	20	6"	150-150	60	285	307	616x520x1388
200WQ250-11-15/4	380	1450	490	21	15	20	8"	200-200	70	305.5	334.5	716x620x1488
200WQ400-8-15/4	380	1450	525	19	15	20	8"	200-200	55	304.5	334.5	716x620x1488
50WQ20-80-18.5	380	2900	45	85.5	18.5	22	2"	50-50	25	217.5	242.5	1240x460x500
50WQ30-75-18.5	380	2900	45	85.5	18.5	22	2"	50-50	25	217.5	242.5	1240x460x500
80WQ70-50-18.5	380	2900	100	58.5	18.5	22	3"	80-80	30	212.5	237.5	1240x460x500
100WQ100-31-18.5/4	380	1450	200	38	18.5	25	4"	100-100	50	326	344.5	700x480x1240
150WQ150-25-18.5/4	380	1450	300	32	18.5	25	6"	150-150	60	305.5	327.5	616x520x1388
200WQ300-13-18.5/4	380	1450	530	25	18.5	25	8"	200-200	70	325.5	354.5	716x620x1488
200WQ400-10-18.5/4	380	1450	525	22	18.5	22	8"	200-200	55	325.5	354.5	716x620x1488
250WQ600-6-18.5/4	380	1450	750	18	18.5	22	10"	250-250	75	354	383	716x620x1488
50WQ20-90-22	380	2900	45	94	22	30	2"	50-50	25	225	250	1240x460x500
50WQ30-85-22	380	2900	45	94	22	30	2"	50-50	25	225	250	1240x460x500
80WQ70-55-22	380	2900	100	63	22	30	3"	80-80	30	219	244	1240x460x500
100WQ100-36-22/4	380	1450	220	44	22	30	4"	100-100	50	346	366.5	700x480x1240
150WQ150-30-22/4	380	1450	330	39	22	30	6"	150-150	60	312	334	616x520x1388
200WQ300-17-22/4	380	1450	550	27	22	30	8"	200-200	70	331.5	360.5	716x620x1488
200WQ400-13-22/4	380	1450	525	24.5	22	30	8"	200-200	55	331.5	360.5	716x620x1488
250WQ600-7-22/4	380	1450	800	22	22	30	10"	250-250	85	360	389	716x620x1488
150WQ150-34-30/4	380	1450	310	45	30	40	6"	150-150	55	497	519	780x600x1430
200WQ300-21-30/4	380	1450	570	33	30	40	8"	200-200	80	519	541	820x620x1470
250WQ500-14-30/4	380	1450	860	27	30	40	10"	250-250	85	512	535	780x650x1490
300WQ800-8-30/4	380	1450	1040	22	30	40	12"	300-300	90	557	581	860x720x1540
150WQ150-40-37/4	380	1450	330	50	37	50	6"	150-150	55	557	579	780x600x1480
200WQ300-25-37/4	380	1450	620	39	37	50	8"	200-200	80	576	598	820x620x1520
250WQ500-18-37/4	380	1450	930	30	37	50	10"	250-250	85	570	593	780x650x1540
300WQ800-11-37/4	380	1450	1060	25	37	50	12"	300-300	90	614	638	860x720x1590
200WQ300-30-45/4	380	1450	660	43	45	60	8"	200-200	80	612	634	820x620x1520
250WQ500-21-45/4	380	1450	950	34	45	60	10"	250-250	85	606	629	780x650x1540
300WQ800-14-45/4	380	1450	1080	28	45	60	12"	300-300	90	650	674	860x720x1590

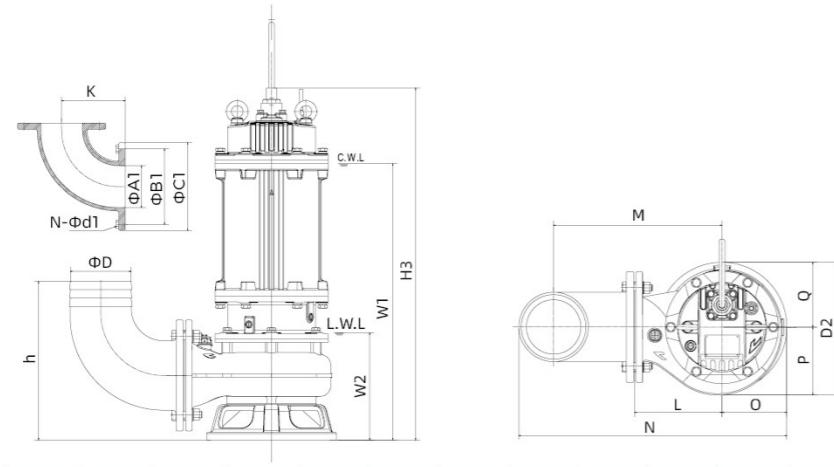
### Dimension



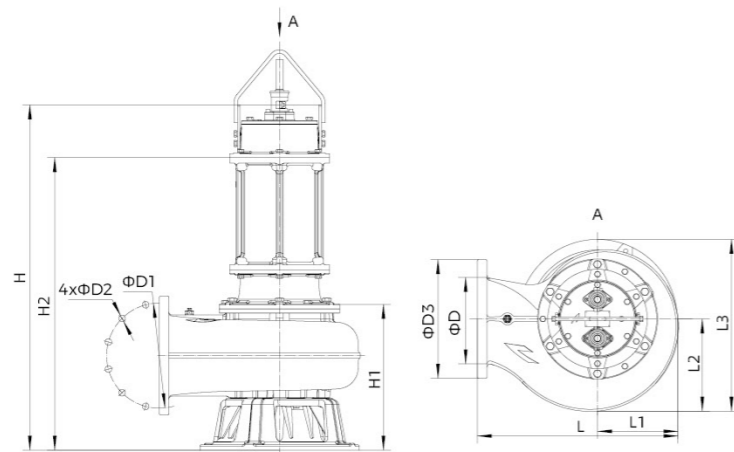
Model	L	L1	L2	L3	M	H	H1	H2	D	D1	D2
50WQ5-7-0.25M	214	120	99	187	16	422	374	81	50	110	14
50WQD5-7-0.25M(A)	214	120	99	187	16	422	374	81	50	110	14
50WQ7-7-0.37M	214	120	99	187	16	422	374	81	50	110	14
50WQD7-7-0.37M(A)	214	120	99	187	16	422	374	81	50	110	14
50WQ6-12-0.55	214	120	99	187	16	422	374	81	50	110	14
50WQD6-12-0.55(A)	214	120	99	187	16	422	374	81	50	110	14
50WQ6-16-0.75	214	120	99	187	16	422	374	81	50	110	14
50WQD6-16-0.75(A)	214	120	99	187	16	422	374	81	50	110	14
50WQ10-10-0.75	214	120	99	187	16	422	374	81	50	110	14
50WQD10-10-0.75(A)	214	120	99	187	16	422	374	81	50	110	14
50WQ8-16-1.1	240	140	99	200	16	459.5	402	94.5	50	110	14
50WQD8-16-1.1(A)	240	140	99	200	16	487.5	429.5	94.5	50	110	14
50WQ15-10-1.1	240	140	99	200	16	459.5	402	94.5	50	110	14
50WQD15-10-1.1(A)	240	140	99	200	16	487.5	429.5	94.5	50	110	14
65WQ15-10-1.1	240	140	99	200	16	462	404.5	97	65	130	14
65WQD15-10-1.1(A)	240	140	99	200	16	490	432	97	65	130	14
50WQ10-20-1.5	240	140	99	200	16	459.5	402	94.5	50	110	14
50WQD10-20-1.5	240	140	99	200	16	523	465.5	94.5	50	110	14
50WQ15-15-1.5	240	140	99	200	16	459.5	402	94.5	50	110	14
50WQD15-15-1.5	240	140	99	200	16	523	465.5	94.5	50	110	14
65WQ15-15-1.5	240	140	99	200	16	462	404.5	97	65	130	14
65WQD15-15-1.5	240	140	99	200	16	526	468	97	65	130	14
50WQ15-20-2.2	240	140	99	200	16	495.5	438	94.5	50	110	14
65WQ15-20-2.2	240	140	99	200	16	498	440.5	97	65	130	14
80WQ40-9-2.2	240	140	103	203	18	515.5	458	106.5	80	150	19
50WQ18-25-3	289	170	121.5	240	16	530	484	109.5	50	110	14
65WQ25-22-3	289	170	121.5	240	16	530	484	109.5	65	130	14
80WQ40-13-3	289	170	123	242	18	553	507	121.5	80	150	19
100WQ60-9-3	303	180	135	254	18	557	511	125.5	100	170	19
50WQ18-32-4	289	170	121.5	240	16	530	484	109.5	50	110	14
65WQ25-28-4	289	170	121.5	240	16	530	484	109.5	65	130	14
80WQ40-18-4	289	170	123	242	18	553	507	121.5	80	150	19
100WQ60-13-4	303	180	135	254	18	557	511	125.5	100	170	19



**Dimension**



Model	ΦD	ΦA1	ΦB1	ΦC1	N-Φd1	h	W1	W2	H3	K	N	O	P	Q	L	M	D2
80WQ30-30-5.5	80	80	150	190	4-Φ18	332	607	215	735	140	515	136	155	155	200	335	310
100WQ45-22-5.5	100	100	170	210	4-Φ18	315	609	220	744	150	530	155	155	155	200	340	310
50WQ20-45-7.5	50	50	110	140	4-Φ14	284	626	221	777	105	484	133	137.5	200	320	272	284
80WQ30-36-7.5	80	80	150	190	4-Φ18	332	640	215	785	140	520	143	155	155	200	335	310
100WQ65-22-7.5	100	100	170	210	4-Φ18	315	639	220	790	150	530	155	155	155	200	340	310
150WQ100-10-7.5	150	150	225	265	8-Φ18	379	660	241	811	230	640	145	162	155	210	410	317
80WQ45-22-7.5/4	80	80	150	190	4-Φ18	390	679	285	880	155	615	173	179	260	395	349	390
100WQ65-15-5.5/4	100	100	170	210	4-Φ18	390	722	295	873	150	655	187	200	175	280	420	373
100WQ100-15-7.5/4	100	100	170	210	4-Φ18	390	722	295	873	150	655	187	200	175	280	420	373
150WQ110-10-5.5/4	150	150	225	265	8-Φ18	465	756	330	910	230	770	195	217	170	300	500	388
150WQ150-10-7.5/4	150	150	225	265	8-Φ18	465	756	330	910	230	770	195	217	170	300	500	387



Model	ΦD	ΦD1	ΦD2	ΦD3	H	H1	H2	L	L1	L2	L3
50WQ15-40-5.5	50	110	4-Φ14	165	767	221	597	355	200	155	310
50WQ20-45-7.5	50	150	4-Φ19	200	896	239	715	377	220	147	314
50WQ20-55-11	50	114	4-Φ18	165	854	237	673	372	220	146.5	304
50WQ30-50-11	50	114	4-Φ18	165	854	237	673	372	220	146.5	304
50WQ20-70-15	50	125	4-Φ18	165	894	237	713	372	220	146.5	304
50WQ30-65-15	50	125	4-Φ18	165	894	237	713	372	220	146.5	304
50WQ20-80-18.5	50	114	4-Φ18	165	1106	248	749	419	250	166	340
50WQ30-75-18.5	50	114	4-Φ18	165	1106	248	749	419	250	166	340

Model	ΦD	ΦD1	ΦD2	ΦD3	H	H1	H2	L	L1	L2	L3
50WQ20-90-22	50	114	4-Φ18	165	1106	248	749	419	250	166	340
50WQ30-85-22	50	114	4-Φ18	165	1106	248	749	419	250	166	340
80WQ45-40-11	80	150	4-Φ19	200	842	225	662	355	200	155	310
80WQ70-30-11	80	150	4-Φ19	200	856	239	675	377	220	147	314
80WQ70-40-15	80	150	4-Φ19	200	896	239	715	377	220	147	314
80WQ70-50-18.5	80	150	4-Φ19	200	1112	251	748	386	220	166	333
80WQ70-55-22	80	150	4-Φ19	200	1112	251	748	386	220	166	333
100WQ80-26-11	100	170	4-Φ19	220	850	234	669	200	355	155	310
150WQ120-18-11	150	227.5	8-Φ23	285	871	253	689	210	365	155	317
80WQ50-15-5.5/4	80	150	4-Φ19	200	880	285	698	280	467	172	373
200WQ400-5-11/4	200	283	8-Φ22	340	1176	416	818	623	370	230	514
200WQ400-8-15/4	200	283	8-Φ22	340	1221	416	863	623	370	230	514
200WQ400-10-18.5/4	200	283	8-Φ22	340	1256	416	898	623	370	230	514
200WQ400-13-22/4	200	283	8-Φ22	340	1256	416	898	623	370	230	514
250WQ600-6-18.5/4	250	338	12-Φ22	395	1332	492	974	666	400	265	570
100WQ100-25-11/4	100	170	4-Φ18	210	910	255	650	516	206	217	410
150WQ180-11-11/4	150	225	8-Φ18	265	940	285	680	528	208	225	413
200WQ300-7-11/4	200	295	8-Φ22	340	980	325	720	566	226	253	444
100WQ100-30-15/4	100	170	4-Φ18	210	955	255	695	516	206	217	410
150WQ200-15-15/4	150	225	8-Φ18	265	985	285	725	528	208	225	413
200WQ250-11-15/4	200	295	8-Φ22	340	1025	325	765	566	226	253	444
100WQ100-31-18.5/4	100	170	4-Φ18	210	1010	185	715	543	218	227	433
150WQ150-25-18.5/4	150	225	8-Φ18	265	1035	290	740	556	221	235	441
200WQ300-13-18.5/4	200	295	8-Φ22	340	1080	330	785	583	233	260	463
100WQ100-36-22/4	100	170	4-Φ18	210	1030	265	735	533	218	227	433
150WQ150-30-22/4	150	225	8-Φ18	265	1055	290	760	556	221	235	441
200WQ300-17-22/4	200	295	8-Φ22	340	1100	330	805	583	233	260	463
250WQ600-7-22/4	250	350	12-Φ22	395	1160	400	860	680	280	313	583
150WQ150-34-30/4	150	240	8-Φ22	285	1200	340	855	652	272	283	553
200WQ300-21-30/4	200	295	8-Φ22	340	1240	380	895	676	286	308	578
250WQ500-14-30/4	250	350	12-Φ22	395	1265	400	920	710	300	332	602
300WQ800-8-30/4	300	400	12-Φ22	445	1315	450	970	820	340	386	676
150WQ150-40-37/4	150	240	8-Φ22	285	1255	340	850	652	272	283	553
200WQ300-25-37/4	200	295	8-Φ22	340	1295	380	890	676	286	308	578
250WQ500-18-37/4	250	350	12-Φ22	395	1315	400	910	710	300	332	602
300WQ800-11-37/4	300	400	12-Φ22	445	1365	450	860	820	340	386	676
200WQ300-30-45/4	200	295	8-Φ22	340	1295	380	930	676	286	308	578
250WQ500-21-45/4	250	350	12-Φ22	395	1315	400	950	710	300	332	602
300WQ800-14-45/4	300	400	12-Φ22	445	1365	450	1000	820	340	386	676





### Application

- Wastewater drainage in factories, construction sites and commercial facilities
- Drainage system in municipal sewage treatment plants
- Drainage station in residential quarters
- Municipal projects
- Methane pools and field irrigation in countryside

### Pump

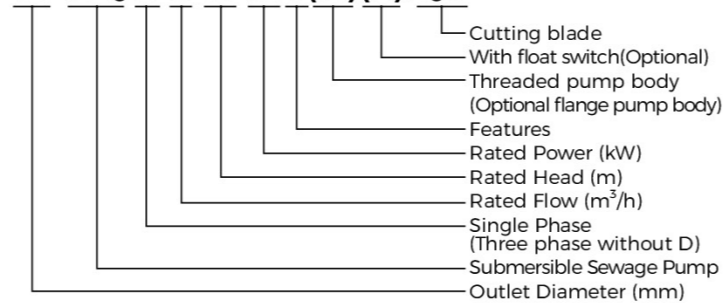
- Cable Length: Standard with 10m
- All electrophoresis casting parts
- High strength cutting system
- Flexible installations with hoses, pipes or quick-coupling
- Double-end mechanical seal
- Stainless Steel welded shaft
- Liquid density  $\leq 1.2 \times 10^3 \text{ kg/m}^3$
- Liquid temperature: 0 - 40 °C
- Liquid PH value: 4 - 10
- Max. immersion Depth: 5 m

### Motor

- Current available with :220V/50HZ; 380V/50HZ
- Running mode:S1
- Copper winding
- Insulation class: F
- Ingress protection: IP68

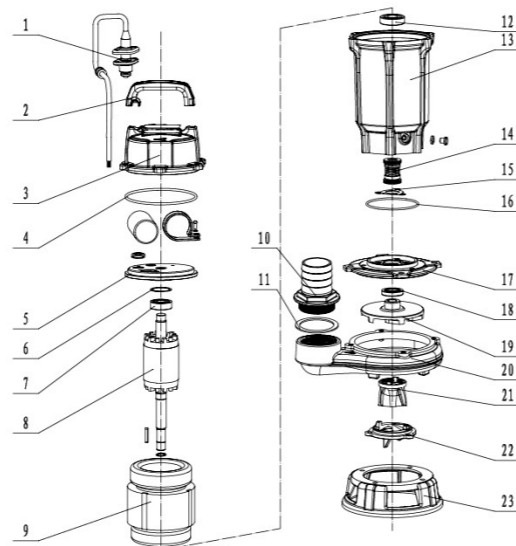
### Identification Codes

**50 WQ D 8-16-1.1 T(M)(A)/QG**



### Materials Table

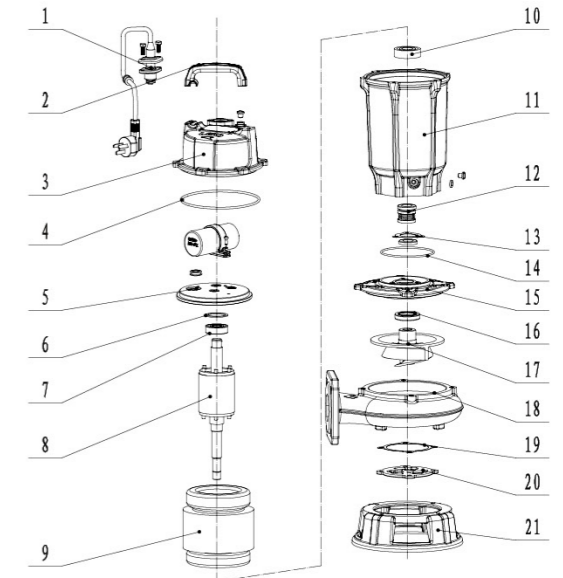
No.	Part	Material
1	Cable	
2	Handle	PP-GF10
3	Top Cover	HT200
4	O-Ring	NBR
5	End Cover	HT200
6	Wave Spring Washer	65Mn
7	Bearing	0.75kw:6203/1.1kw:6203
8	Rotor	Shaft:SS304+45# Steel
9	Stator	
10	The water connection	HT200
11	Rubber washer	NBR
12	Bearing	0.75kw:6203/1.1kw:6204
13	Motor Casing	HT200
14	Mechanical Seal	Q2Q2/B6AV2P1F1F1
15	Pressing plate	SS304
16	O-Ring	NBR
17	Cylinder Head	HT200
18	Oil Seal	NBR
19	Impeller	HT200
20	Pump Body	HT200
21	Cutter	9Cr18
22	Fixed cutter head	9Cr18
23	Base	HT200



0.75 - 1.1kW  
Thread connector

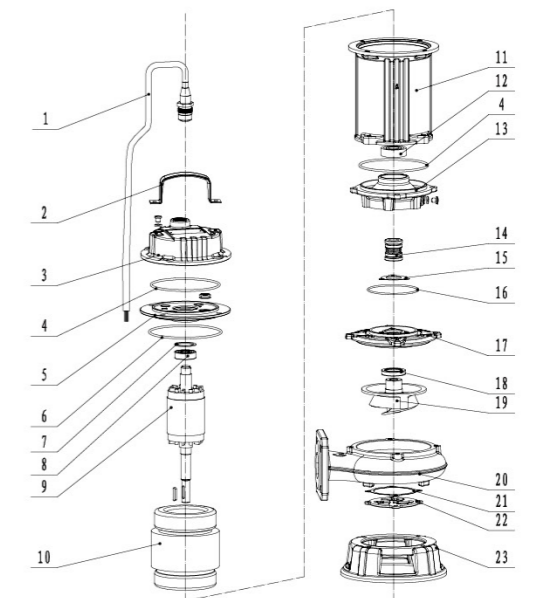
### Materials Table

No.	Part	Material
1	Cable	
2	Handle	PP-GF10
3	Top Cover	HT200
4	O-Ring	NBR
5	End Cover	HT200
6	Wave Spring Washer	65Mn
7	Bearing	6203
8	Rotor	Shaft:SS304+45# Steel
9	Stator	
10	Bearing	6204
11	Motor Casing	HT200
12	Mechanical Seal	Q2Q2/B6AV2P1F1F1
13	Pressing plate	SS304
14	O-Ring	NBR
15	Cylinder Head	HT200
16	Oil Seal	NBR
17	Impeller	HT200
18	Pump Body	HT200
19	Paper gasket	Highland barley paper
20	Fixed cutter head	9Cr18
21	Base	HT200



1.1kW  
Flange connector

No.	Part	Material
1	Cable	
2	Handle	SS304
3	Top Cover	HT200
4	O-Ring	NBR
5	End Cover	HT200
6	O-Ring	NBR
7	Wave Spring Washer	65Mn
8	Bearing	6203
9	Rotor	Shaft:SS304+45# Steel
10	Stator	
11	Motor Casing	HT200
12	Bearing	2.2kw:6305/1.5kw:6204
13	Oil chamber	HT200
14	Mechanical Seals	Q2Q2/B6AV2P1F1F1
15	Pressing	SS304
16	O_Sealing Ring	NBR
17	Cylinder Head	HT200
18	Oil Seal	NBR
19	Impeller	9Cr18
20	Pump Body	HT200
21	Paper gasket	Highland barley paper
22	Fixed cutter head	9Cr18
23	Base	HT200

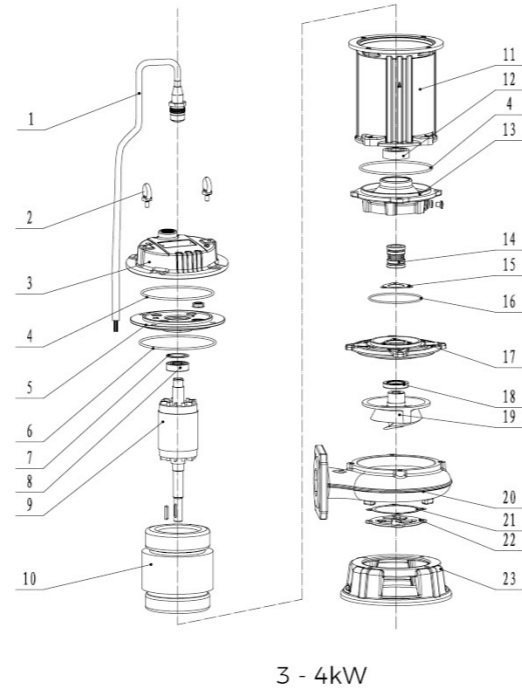


1.5 - 2.2kW

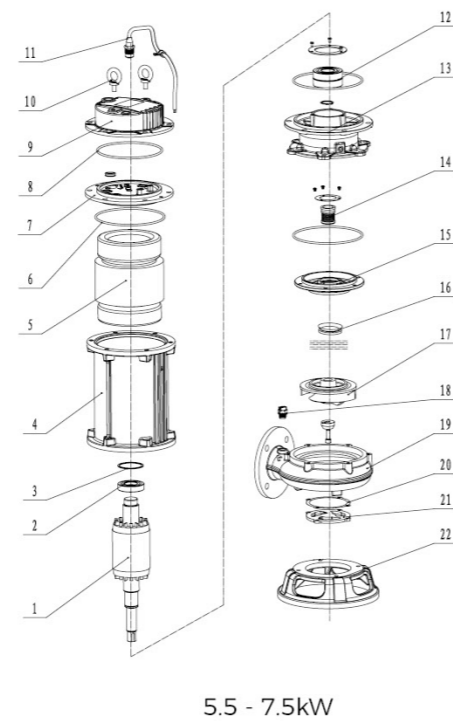


## Materials Table

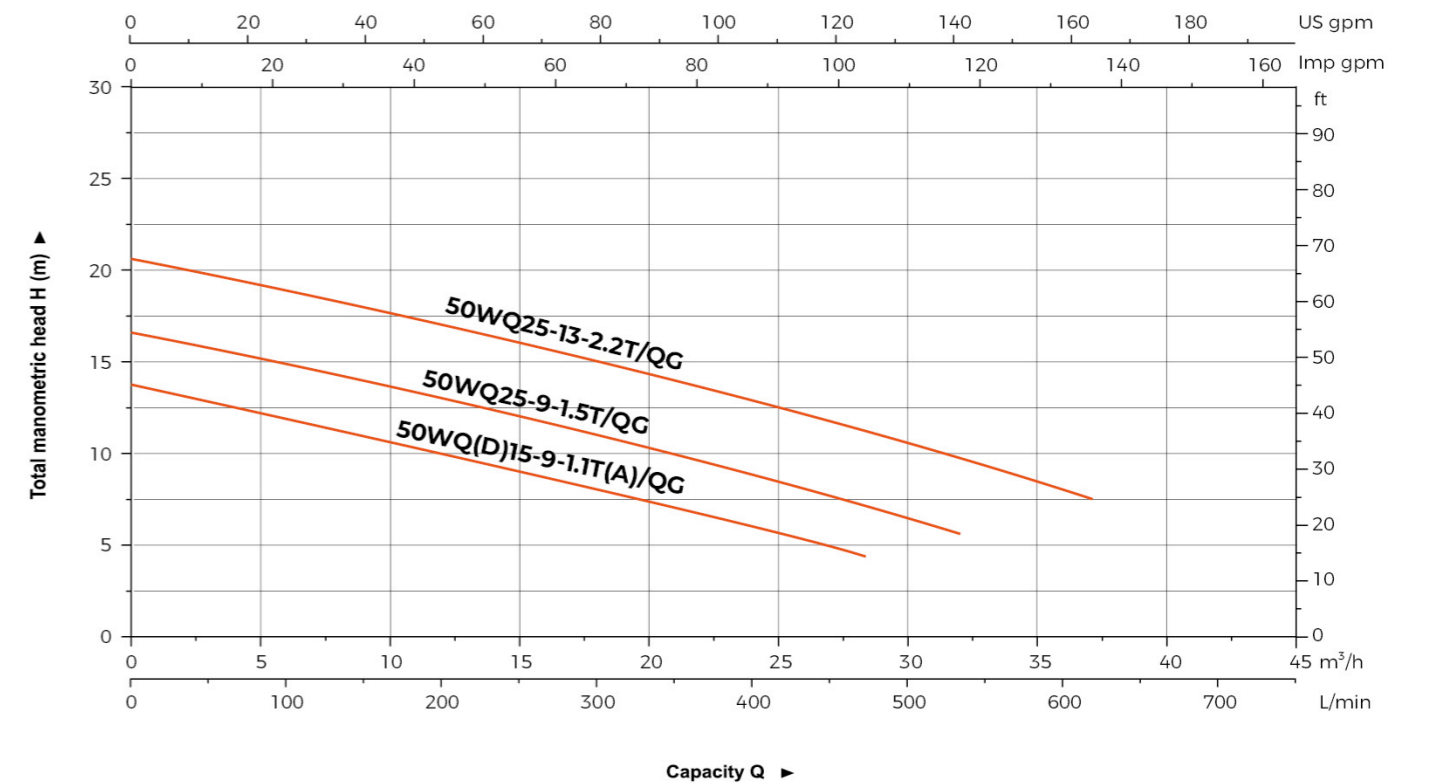
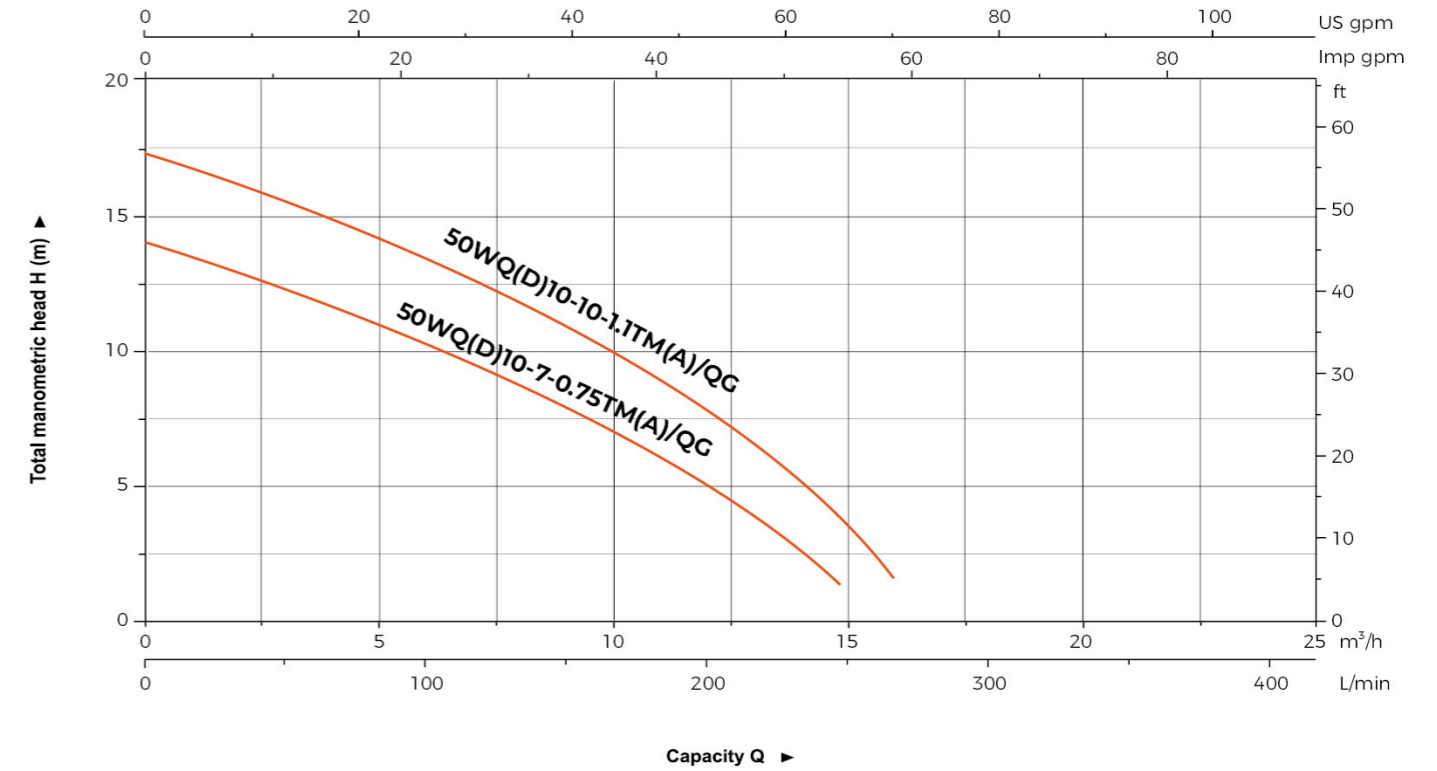
No.	Part	Material
1	Cable	
2	Handle	SS304
3	Top Cover	HT200
4	O-Ring	NBR
5	End Cover	HT200
6	O-Ring	NBR
7	Wave Spring Washer	65Mn
8	Bearing	6304
9	Rotor	Shaft:2Cr13
10	Stator	
11	Motor Casing	HT200
12	Bearing	6306
13	Oil chamber	HT200
14	Mechanical Seals	Q2Q2/B6AV2P1F1F1
15	Pressing	SS304
16	O_Sealing Ring	NBR
17	Cylinder Head	HT200
18	Oil Seal	
19	Impeller	9Cr18
20	Pump Body	HT200
21	Paper gasket	Highland barley paper
22	Fixed cutter head	9Cr18
23	Base	HT200



No.	Part	Material
1	Rotor	SS 304 + 45#
2	Bearing	
3	Wave spring	65Mn
4	Cabinet	HT 200
5	Winding	
6	O-ring	NBR
7	Upper cover	HT 200
8	O-ring	NBR
9	Top cover	HT 200
10	Lifting ring	SS 304
11	Cable assembly	
12	Bearing	
13	Oil chamber	HT 200
14	Mechanical seal	SiC-SiC
15	Pump cover	HT 200
16	V-ring	NBR
17	Impeller	9Cr18
18	Exhaust valve	PA66-GF30
19	Pump body	HT 200
20	Paper gasket	Barley paper
21	Cutter head	9Cr18
22	Base	HT200

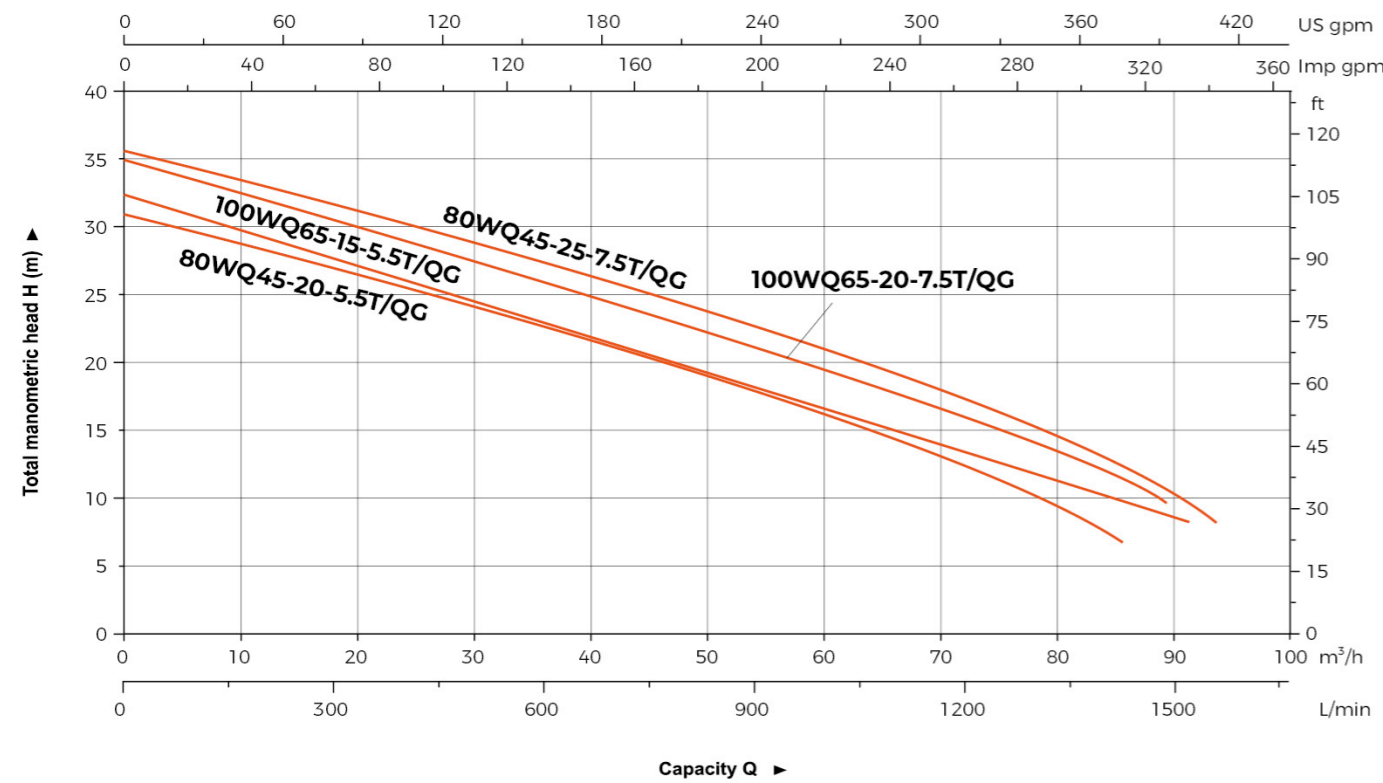
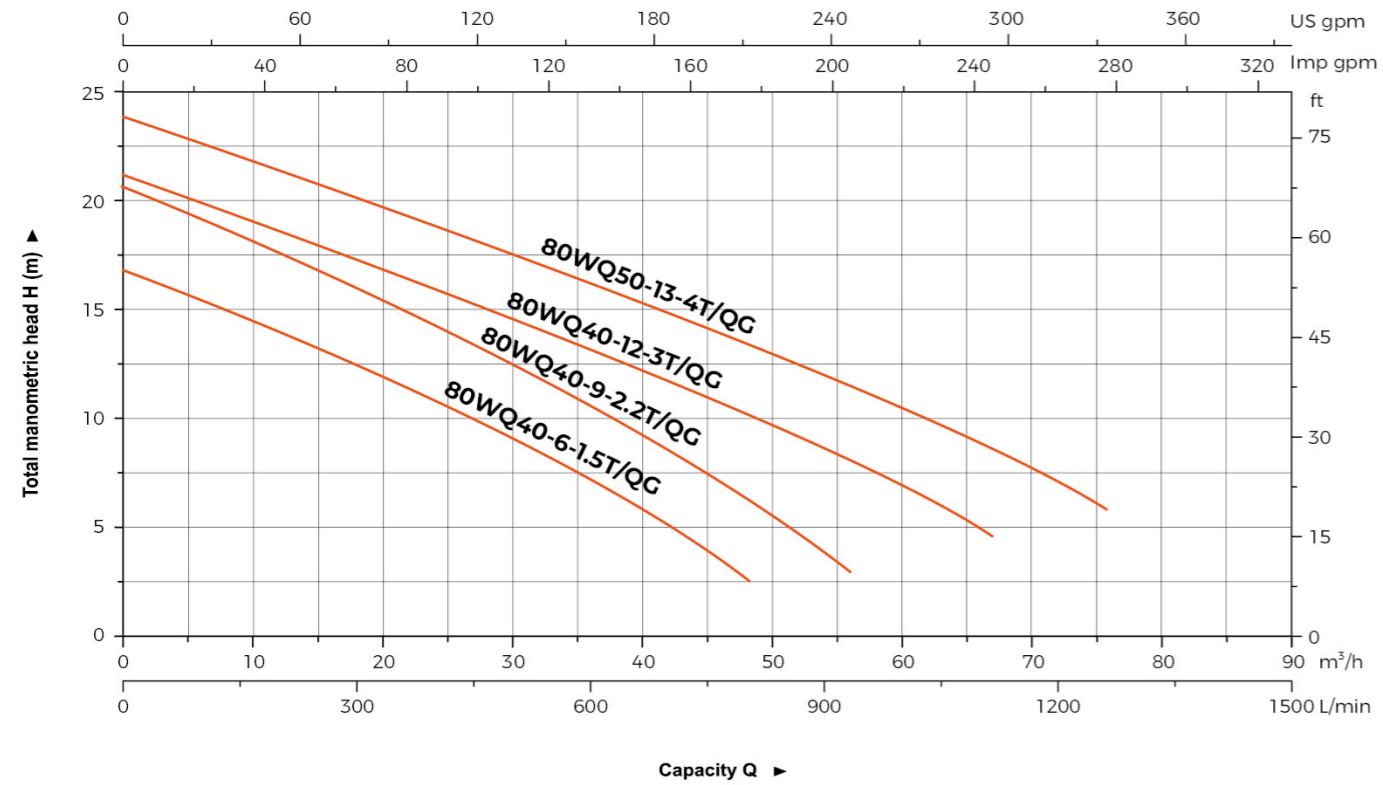


## Hydraulic Performance Curves





**Hydraulic Performance Curves**

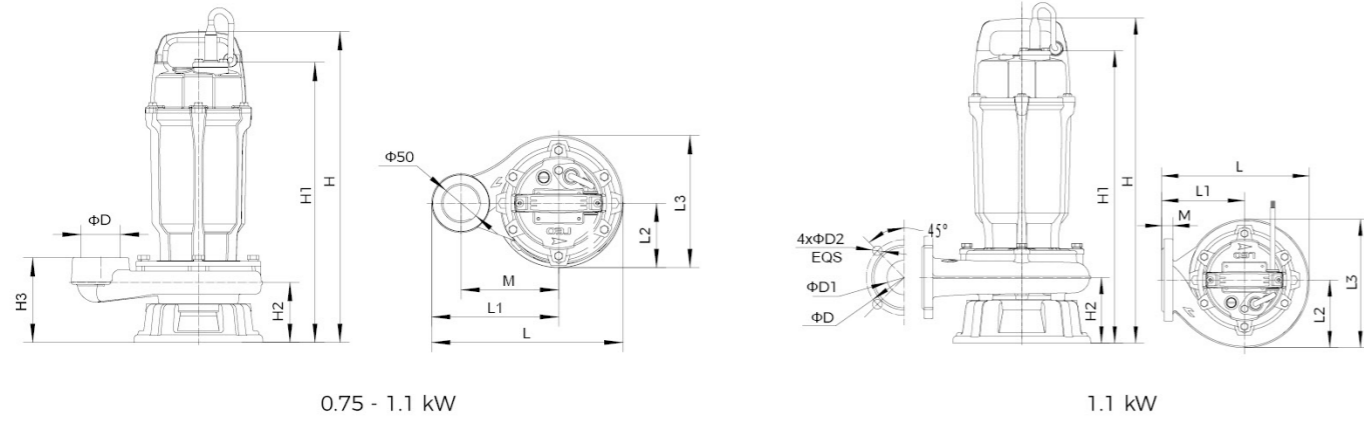


**Technical Data**

Model	Voltage	Speed	Max. Flow	Max. Head	Power		Outlet	Guide Rial Fitting	N.W	G.W	Packing Dimension
	V	r.p.m	m <sup>3</sup> /h	m	KW	HP	inch		kg	kg	mm
50WQD10-7-0.75TM(A)/QG	220	3000	14	14	0.75	1	2"	/	16.1	19.5	494x269x214
50WQ10-7-0.75TM/QG	380	3000	14	14	0.75	1	2"	/	15.4	18.8	494x269x214
50WQD10-10-1.1TM(A)/QG	220	3000	16	17	1.1	1.5	2"	/	21.6	25.5	544x269x244
50WQ10-10-1.1TM/QG	380	3000	16	17	1.1	1.5	2"	/	20.2	24.1	544x269x244
50WQD15-9-1.1T(A)/QG	220	3000	28	14	1.1	1.5	2"	50-50	22.5	28.3	544x269x244
50WQ15-9-1.1T/QG	380	3000	28	14	1.1	1.5	2"	50-50	21.1	26.8	544x269x244
50WQ25-9-1.5T/QG	380	3000	32	16	1.5	2	2"	50-50	25	30.7	544x269x244
80WQ40-6-1.5T/QG	380	3000	48	17	1.5	2	3"	80-80	27.6	35.53	604x289x249
50WQ25-13-2.2T/QG	380	3000	37	20	2.2	3	2"	50-50	29.3	35.27	604x269x244
80WQ40-9-2.2T/QG	380	3000	56	21	2.2	3	3"	80-80	31.9	39.83	604x289x249
80WQ40-12-3T/QG	380	3000	68	21	3	4	3"	80-80	43.6	53.52	744x324x289
80WQ50-13-4T/QG	380	3000	76	25	4	5.5	3"	80-80	46.2	56.12	744x324x289
80WQ45-20-5.5T/QG	380	3000	60	30.5	5.5	7.5	3"	80-80	83	103	904x399x439
100WQ65-15-5.5T/QG	380	3000	80	32	5.5	7.5	4"	100-100	84	107	904x399x439
80WQ45-25-7.5T/QG	380	3000	60	35.5	7.5	10	3"	80-80	105	127	1054x399x439
100WQ65-20-7.5T/QG	380	3000	80	34.5	7.5	10	4"	100-100	106	131	1054x399x439



**Dimension**

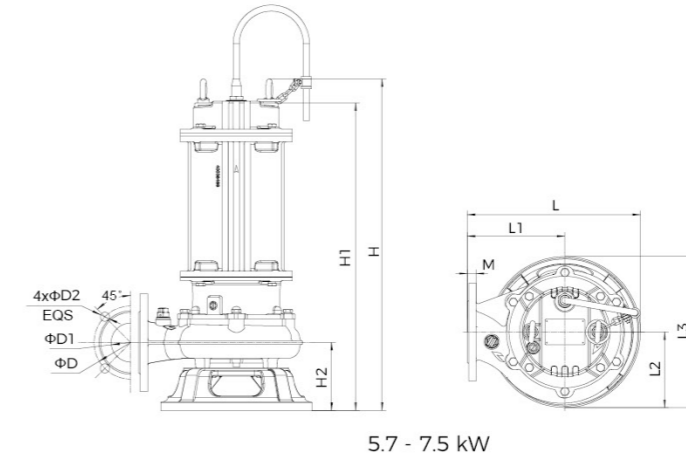


0.75 - 1.1 kW

1.1 kW

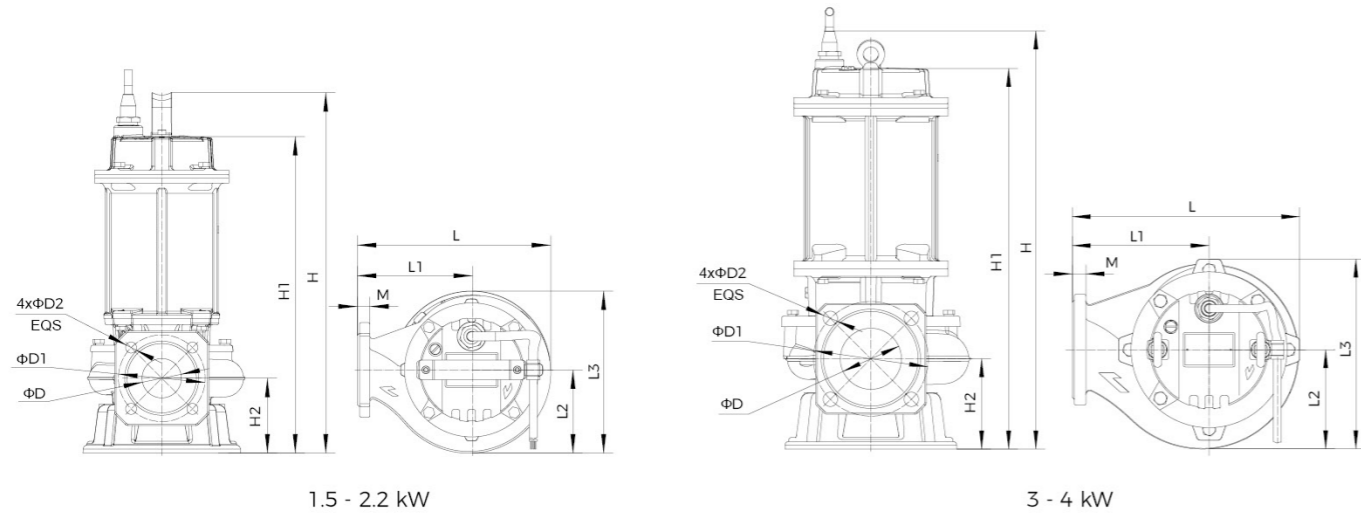
Model	L	L1	L2	L3	M	H	H1	H2	D	D1	D2
50WQD10-7-0.75TM(A)/QG	245	163	82.5	169	125	397.5	358	76	50	/	/
50WQ10-7-0.75TM/QG	245	163	82.5	169	125	397.5	358	76	50	/	/
50WQD10-10-1.1TM(A)/QG	268	168	100	200	133	453.5	407.5	90	50	/	/
50WQ10-10-1.1TM/QG	268	168	100	200	133	453.5	407.5	90	50	/	/
50WQD15-9-1.1T(A)/QG	245.5	145	100.5	206	16	470.5	437.5	94.5	50	110	14
50WQ15-9-1.1T/QG	245.5	145	100.5	206	16	470.5	437.5	94.5	50	110	14

**Dimension**



5.7 - 7.5 kW

Model	L	L1	L2	L3	M	H	H1	H2	D	D1	D2
80WQ45-20-5.5TQG	355	200	155	310	18	683	631	139	150	80	19
100WQ65-15-5.5TQG	355	200	155	310	18	685	366	138	170	100	19
80WQ45-25-7.5TQG	355	200	155	310	18	722	670	139	150	80	19
100WQ65-20-7.5TQG	355	200	155	310	18	724	672	138	170	100	19



1.5 - 2.2 kW

3 - 4 kW

Model	L	L1	L2	L3	M	H	H1	H2	D	D1	D2
50WQ25-9-1.5T/QG	245.5	145	106	206	16	457	399.5	94.5	50	110	14
80WQ40-6-1.5T/QG	272.5	160	117	229	18	472.5	415	110	80	150	19
50WQ25-13-2.2T/QG	245.5	145	106	206	16	493	437.5	94.5	50	110	14
80WQ40-9-2.2T/QG	272.5	160	117	229	18	509	453	110	80	150	19
80WQ40-12-3T/QG	298	179	130	248.5	18	544	498.5	118	80	150	19
80WQ50-13-4T/QG	298	179	130	248.5	18	544	498.5	118	80	150	19





### Guide Rail System

- Suitable for pumps with flange conforming ISO7005-92 standard.
- Automatic engagement with flanged elbow

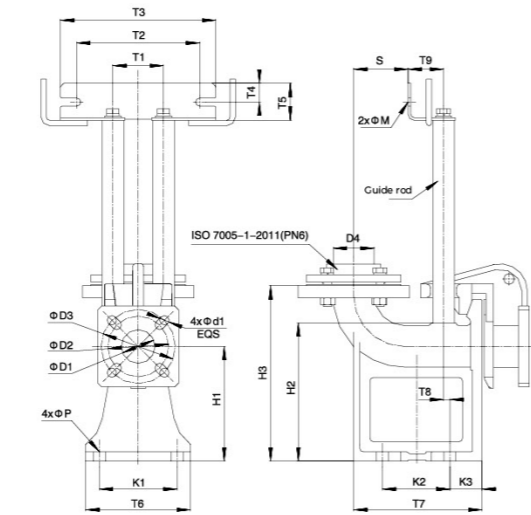
### Includes

- Duck-foot bend
  - Guide hook
  - Flange connector
  - Upper guide support
  - Bolts and lock washers
- (Foundation bolts and guide pipes are not included)

### Identification Codes

**SW 50 - 50**

- Pipe Diameter
- Pump Outlet
- LEO Product Style



### Dimension

Model	D1	D2	D3	D4	T1	T2	T3	T4	T5	T6	T7	T8	T9	K1	K2	K3	H1	H2	H3	S	M	P	d1
SW50-50(PN6)	50	90	110	G2	75	182	230	28	55	165	190	12	52.5	115	100	45	170	205	260	80.5	12	18	14
SW65-65(PN6)	65	-	130	G2.5	85	182	230	28	55	190	210	17	59	145	120	45	175	220	270	89	12	18	14
SW80-80(PN6)	80	-	150	G3	85	182	230	28	55	220	242	27	59	175	160	41	190	246	290	115	12	18	18
SW100-100(PN6)	100	170	-	-	100	182	250	28	55	220	350	38	59	169	266	41	230	305	360	135	14	22	19
SW100-100(PN10)	100	-	180	-	100	182	250	28	55	220	350	38	59	169	266	41	230	305	360	135	14	22	19
SW150-150(PN6)	150	225	-	-	100	182	250	28	55	330	460	40	59	280	340	57	275	380	447	191	14	22	19
SW150-150(PN10)	150	-	240	-	100	182	250	28	55	330	460	40	59	280	340	57	275	380	447	191	14	22	22

Standard with threaded flange and fastening bolt, with bracket welder. Without guide rod, guide chain and anchor bolts, and without fixed bolts for bracket weldment, the customer shall provide them by himself. Guide rod can be standard galvanized water pipe. (DN100 and above are circular outlets without flanges)

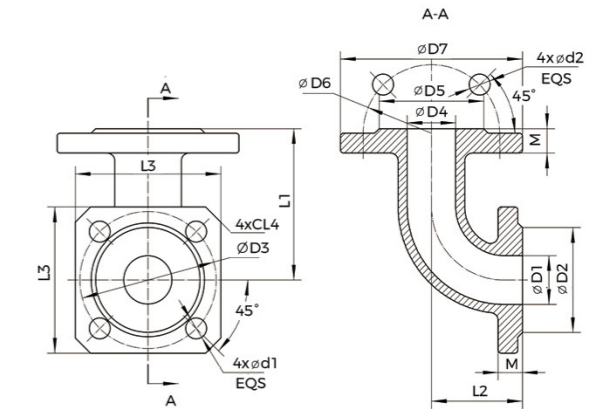
### Package Information

Model	Caliber (mm)	Nominal pressure	Packing Dimension (mm)	G.W (kg)	N.W (kg)
DN50-PN6	50	PN6	377x322x205	23	17.6
DN65-PN6	65	PN6	406x339x230	30	23.5
DN80-PN6	80	PN6	460x375x270	39.5	30.8
DN100-PN6	100	PN6	523x483x296	53.8	45
DN150-PN6	150	PN6	605x355x650	97	86.6
DN200-PN6	200	PN6	690x390x757	138.5	122.5
DN250-PN6	250	PN6	765x430x845	179	160
DN100-PN10	100	PN10	523x483x296	53.8	45
DN150-PN10	150	PN10	605x355x650	97	86.6
DN200-PN10	200	PN10	690x390x757	138.5	122.5
DN250-PN10	250	PN10	765x430x845	179	160

### Flange Elbow



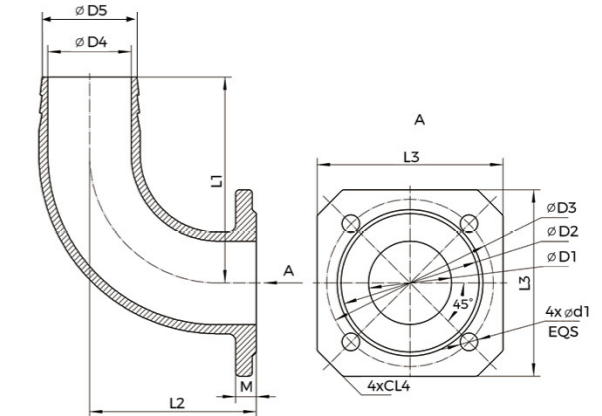
### Dimension



Model	D1	D2	D3	D4	D5	D6	D7	L1	L2	L3	L4	M	d1	d2
32-32 Flange Elbow	32	69	90	32	69	90	120	100	60	96	10	16	14	14
40-50 Flange Elbow	40	78	100	50	88	110	140	120	60	110	15	16	14	14
50-50 Flange Elbow	50	88	110	50	88	110	140	105	105	120	15	16	14	14
65-65 Flange Elbow	65	108	130	65	108	130	160	130	130	145	20	16	14	14
80-80 Flange Elbow	80	124	150	80	124	150	190	155	155	145	15	18	18	18

### Hose Coupling

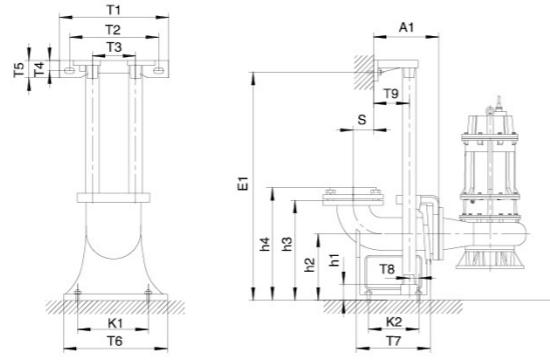
### Dimension



Model	D1	D2	D3	D4	D5	L1	L2	L3	L4	M	d1
• 50-40 Hose Coupling	50	88	110	38	48	115	65	120	15	16	14
• 65-50 Hose Coupling	65	108	130	51	61	125	68	145	20	16	14
• 80-60 Hose Coupling	80	124	150	60	70	140	75	145	15	16	18
50-50 Hose Coupling	50	88	110	50	58	140	120	120	15	16	14
65-65 Hose Coupling	65	108	130	65	74	160	130	145	20	18	14
80-80 Hose Coupling	80	124	150	80	87	190	135	145	15	18	18

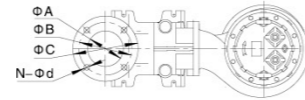
• Product standard

### Coupler installation size drawing



#### Main accessories

- Coupling seat
  - Coupling block
  - Upper guide rod frame
  - Flange(≤4")
- Guide rods, anchor bolts, expansion bolts, chain assembly are not included



Model	ΦA	ΦB	ΦC	N-Φd	T1	T2	T3	T4	T5	T6	T7	T8	T9	K1	K2	S	h1	h2	h3	h4	A1	N.W (kg)	Guide rod length (mm)
200-200(PN10)	Φ200	295	340	8-Φ22	400	260	280	24	48	400	445	100	95	300	355	230	440	325	555	-	285	125	E1-460
250-250(PN10)	Φ250	350	395	12-Φ22	400	260	280	24	48	460	555	110	95	360	430	295	460	315	630	-	310	195	E1-480
300-300(PN10)	Φ300	400	445	12-Φ22	520	340	375	32	65	550	600	140	115	414	460	270	570	415	730	-	380	305	E1-590

Note: The guide rod pipes, anchor bolts, and upper guide rod frame bolts need to be provided by the customer. Standard galvanized water pipes can be used as guide rods. 4 inches (100-100) and below are equipped with internal, threaded flanges and bolts and nuts, 6 inches (150-150) and above are not equipped with internal threaded flanges and bolts and nuts

### Internal thread

Coupling assembly	Material	50-50 (PN6)	65-65 (PN6)	80-80 (PN6)	100-100 (PN6)	100-100(PN10)
Coupling seat	Cast iron	DN40/DN50(PN6)	DN65(PN6)	DN80(PN6)	DN100(PN6)	DN100(PN10)
Coupling block	Cast iron	DN32/DN40/DN50(PN6)	DN65-65(PN6)	DN80-80(PN6)	DN100-100(PN6)	DN100-100(PN10)
*Flange gasket	Nitrile rubber	DN32/DN40/DN50(PN6)	DN65(PN6)	DN80(PN6)	DN100(PN6)	DN100(PN10)
*Bolt	Carbon steel	4-M12x55	4-M12x55	4-M16x60	4-M16x60	8-M16x60
*Spring pad	Carbon steel	4-Φ12	4-Φ12	4-Φ16	4-Φ16	8-Φ16
*Nut	Carbon steel	4-M12	4-M12	4-M16	4-M16	8-M16
*Anti-flange	Cast iron	G2(Internal thread ) (Matching)	G2 <sup>1</sup> / <sub>2</sub> (Internal thread ) (Matching)	G3(Internal thread ) (Matching)	DN100	DN100
*Flange gasket	Nitrile rubber	DN50(PN6)(Matching)	DN65(PN6)(Matching)	DN80(PN6)(Matching)	DN100(PN6)	DN100(PN6)
*Bolt	Carbon steel	4-M12x55(Matching)	4-M12x55(Matching)	4-M16x60(Matching)	4-M16x60	8-M16x60
*Spring pad	Carbon steel	4-Φ12(Matching)	4-Φ12(Matching)	4-Φ16(Matching)	4-Φ16	8-Φ16
*Nut	Carbon steel	4-M12(Matching)	4-M12(Matching)	4-M16(Matching)	4-M16	8-M16
Upper guide rod frame	Sheetmetal	DN50	DN65	DN80	DN100	DN100
Recommended reserved hole size for anchor bolts		80x80x270	80x80x270	80x80x270	100x100x350	100x100x350
*Guide rod	*Model	Φ32xΦ26	Φ42xΦ36	Φ42xΦ36	Φ45xΦ39	Φ45xΦ39
	Length	(Pool depth)-205mm	(Pool depth)-225mm	(Pool depth)-245mm	(Pool depth)-305mm	(Pool depth)-305mm
*Accessory pack (See below for details)		TOPJ-03	TOPJ-03	TOPJ-03	TOPJ-05t	TOPJ-05

Note: The mark \* means that the accessories not included in the coupler need to be configured separately (Except for matching)

### Internal thread

Coupling assembly	Material	150-150 (PN6)	150-150 (PN10)	200-200 (PN10)	250-250 (PN10)	300-300 (PN10)	400-400 (PN10)
Coupling seat	Cast iron	DN150(PN6)	DN150(PN10)	DN200(PN10)	DN250(PN10)	DN300(PN10)	DN400(PN10)
Coupling block	Cast iron	DN150-150(PN10)	150-150(PN10)	200-200(PN10)	250-250(PN10)	300-300(PN10)	400-400(PN10)
*Flange gasket	Nitrile rubber	DN150(PN6)	DN150(PN10)	DN200(PN10)	DN250(PN10)	DN300(PN10)	DN400(PN10)
*Bolt	Carbon steel	8-M16x60	8-M20x65	8-M20x80	12-M20x80	12-M20x100	16-M24x100
*Spring pad	Carbon steel	8-Φ16	8-Φ20	8-Φ20	12-Φ20	12-Φ20	16-Φ24
*Nut	Carbon steel	8-M16	8-M20	8-M20	12-M20	12-M20	16-M24
*Anti-flange	Cast iron	DN150	DN150	DN200	DN250	DN300	DN400
*Flange gasket	Nitrile rubber	DN150(PN6)	DN150(PN10)	DN200(PN10)	DN250(PN10)	DN300(PN10)	DN400(PN10)
*Bolt	Carbon steel	8-M16x60	8-M20x65	8-M20x80	12-M20x80	2-M20x100	16-M24x100
*Spring pad	Carbon steel	8-Φ16	8-Φ20	8-Φ20	12-Φ20	12-Φ20	16-Φ24
*Nut	Carbon steel	8-M16	8-M20	8-M20	12-M20	12-M20	16-M24
Upper guide rod frame	Sheetmetal or Cast iron	DN150	DN150	DN200	DN250	DN300	DN400
Recommended reserved hole size for anchor bolts		100x100x350	100x100x350	100x100x350	100x100x350	100x100x350	100x100x350
*Guide rod	*Model	Φ45x39	Φ45x39	Φ48x42	Φ48x42	Φ60x53	Φ60x53
	Length	(Pool depth)-380mm	(Pool depth)-380mm	(Pool depth)-460	(Pool depth)-480	(Pool depth)-590	(Pool depth)-790
*Accessory pack (See below for details)		≤22KW:TOPJ-05 30-45KW:TOPJ-06	≤22KW:TOPJ-05 30-45KW:TOPJ-06	≤22KW:TOPJ-08 30-45KW:TOPJ-09 55-75KW:TOPJ-10	≤22KW:TOPJ-08 30-45KW:TOPJ-09 55-75KW:TOPJ-10	30-45KW:TOPJ-09 55-75KW:TOPJ-10	30-45KW:TOPJ-09 55-75KW:TOPJ-10

Note: The mark \* means that the accessories not included in the coupler need to be configured separately (Except for matching)

Accessory pack	Includes accessories		
	Anchor bolt	Expansion bolt	Chain specification
TOPJ-03	4-M16x220	2-M12x120	Φ5
TOPJ-05	4-M20x300	2-M12x120	Φ6
TOPJ-06	4-M20x300	2-M12x120	Φ8
TOPJ-08	4-M24x300	3-M14x120	Φ6
TOPJ-09	4-M24x300	3-M14x120	Φ8
TOPJ-10	4-M24x300	3-M14x120	Φ10

Remarks: The accessory package is optional and can be purchased separately when needed, separate inquiry required





### Application

- Civil engineering
- Mines, quarries, Coal ore & slurries
- Sewage treatment plants
- General pumping purposes

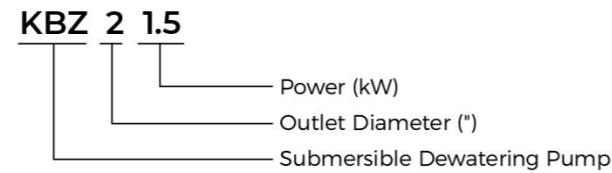
### Pump

- Max. liquid temperature: +40°C
- Flow: up to 156 m<sup>3</sup>/h
- Head: up to 57 m
- Power: 1.5 kW (2 HP) to 15 kW (20 HP)
- Max. Immersion depth: 25 m
- Cable Length: 8 m

### Motor

- Copper winding
- Insulation class: B
- Protection class: IP68

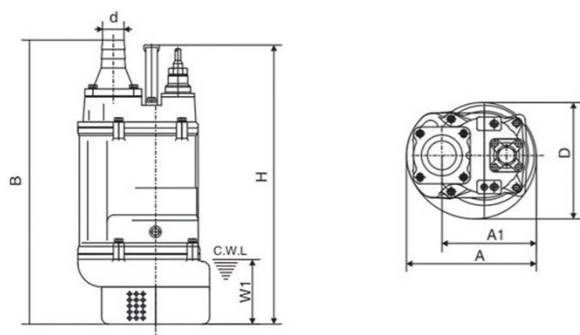
### Identification Codes



### Technical Data

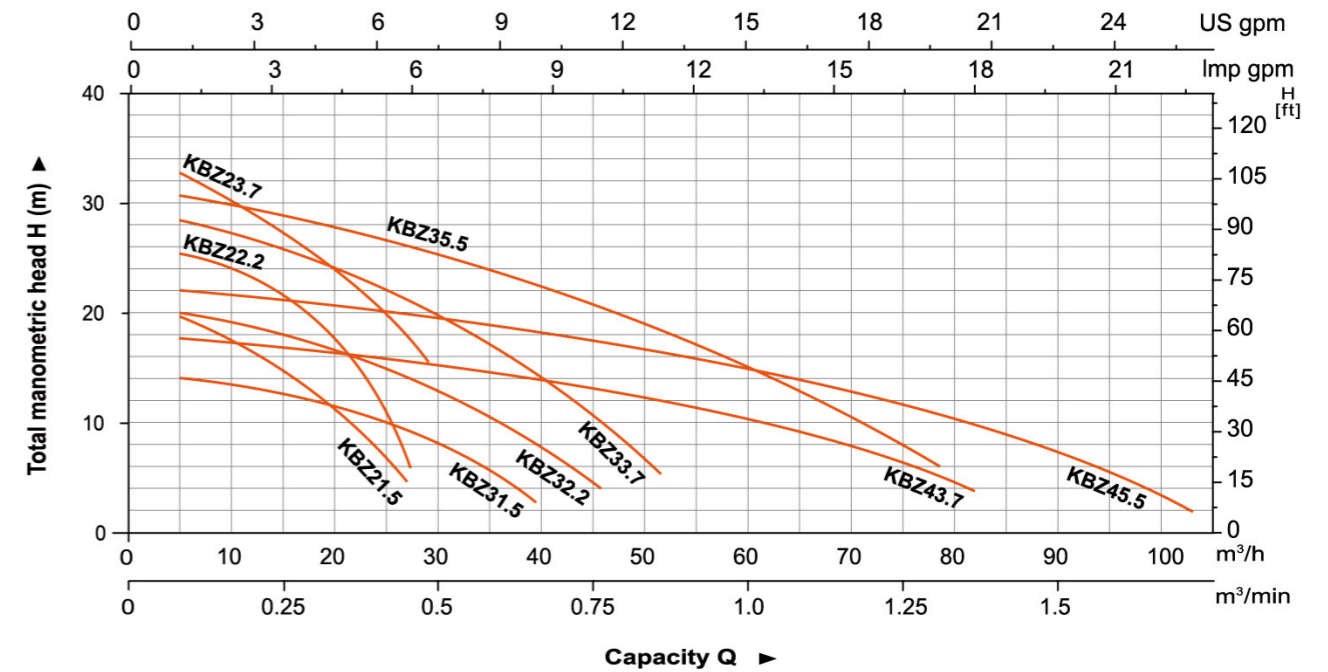
Model	Power		Discharge mm	Max. flow		Max. head m	Max. Solid Dia mm
	kW	HP		m <sup>3</sup> /h	l/min		
KBZ21.5	1.5	2	50	33	550	22	8.5
KBZ22.2	2.2	3	50	33	550	26	8.5
KBZ23.7	3.7	5	50	33	550	34	8.5
KBZ31.5	1.5	2	80	40	670	14.5	8.5
KBZ32.2	2.2	3	80	55	920	19	8.5
KBZ33.7	3.7	5	80	55	920	29	8.5
KBZ35.5	5.5	7.5	80	75	1250	34	8.5
KBZ43.7	3.7	5	100	90	1500	18.5	8.5
KBZ45.5	5.5	7.5	100	105	1750	23	8.5

### Dimension



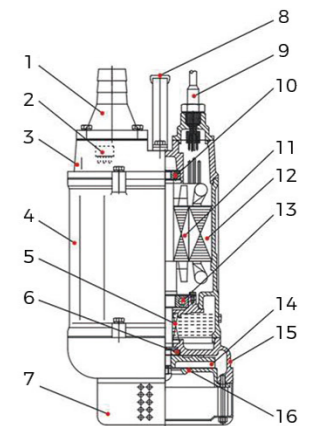
Model	d (mm)	A (mm)	A1 (mm)	B (mm)	D (mm)	H (mm)	W1 (mm)
KBZ21.5	50	235	173	517	216	486	120
KBZ22.2	80	235	173	517	216	486	120
KBZ23.7	50	235	173	517	216	486	120
KBZ31.5	80	235	173	517	216	486	120
KBZ32.2	50	283	208	628	252	638	150
KBZ33.7	80	283	208	628	252	638	150
KBZ35.5	100	283	208	642	252	638	150
KBZ43.7	80	306	218	671	259	598	150
KBZ45.5	100	306	218	686	259	598	150

### Hydraulic Performance Curves



### Materials Table

No.	Part	Material	No.	Part	Material
1	Hose coupling	Cast iron	9	Cable	
2	Thermal protector		10	Bearing	
3	Upper cover	Cast iron	11	Rotor	
4	Motor cover	Cast iron	12	Stator	
5	Oil seal		13	Bearing	
6	Mechanical seal	Lower: Sic-Sic Upper: Carbon-Sic (≤2.2kW) Lower: Sic-Sic Upper: Sic-Sic (≥3.7kW)	14	Impeller	High chrome alloy
7	Strainer	Steel	15	Pump body	Cast iron
8	Handle	Steel	16	Inlet plate	Ductile iron



### Package Information

Model	N.W (kg)	GW (kg)	L (mm)	W (mm)	H (mm)	Quantity (PCS/20 TEU)
KBZ21.5	34.5	37.5	585	270	270	648
KBZ22.2	36	39	585	270	270	648
KBZ23.7	60	65	685	325	300	406
KBZ31.5	34.5	37	585	270	270	648
KBZ32.2	36	39	585	270	270	648
KBZ33.7	60	65	685	325	300	406
KBZ35.5	77	84	725	355	370	288
KBZ43.7	61	66	685	325	300	406
KBZ45.5	78	85	725	355	370	288



### Application

- Civil engineering
- Mines, quarries, Coal ore & slurries
- Sewage treatment plants
- General pumping purposes

### Pump

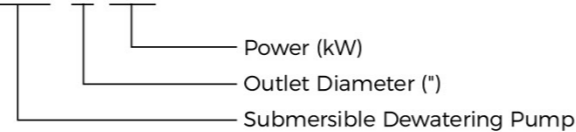
- Max. liquid temperature: +40°C
- Flow: up to 156 m<sup>3</sup>/h
- Head: up to 57 m
- Power: 1.5 kW (2 HP) to 15 kW (20 HP)
- Max. Immersion depth: 25 m
- Cable Length: 8 m

### Motor

- Copper winding
- Insulation class: B
- Protection class: IP68

### Identification Codes

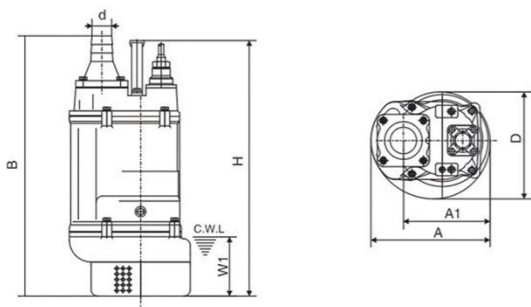
**KBZ 4 7.5**



### Technical Data

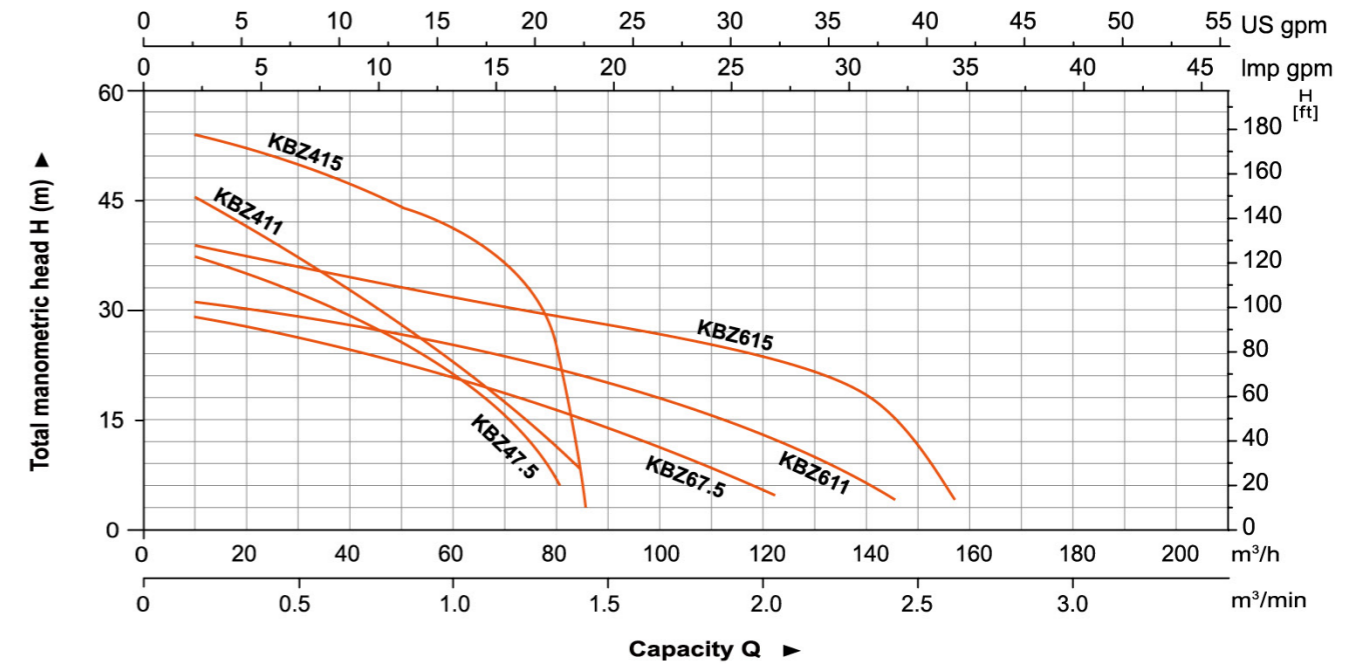
Model	Power		Discharge mm	Max. flow		Max. head m	Max. Solid Dia mm
	kW	HP		m <sup>3</sup> /h	l/min		
KBZ47.5	7.5	10	100	84	1400	40	11.5
KBZ411	11	15	100	84	1400	48.5	11.5
KBZ415	15	20	100	84	1400	56	11.5
KBZ67.5	7.5	10	150	124.8	2080	31	19.5
KBZ611	11	15	150	147	2450	32	19.5
KBZ615	15	20	150	156	2600	40	19.5

### Dimension



Model	d (mm)	A (mm)	A1 (mm)	B (mm)	D (mm)	H (mm)	W1 (mm)
KBZ47.5	100	330	240	764	314	676	190
KBZ411	100	373	255	807	350	695	190
KBZ67.5	150	330	240	790	314	676	190
KBZ611	150	373	255	807	350	695	190
KBZ415	100	373	255	842	350	755	190
KBZ615	150	373	255	842	350	755	190

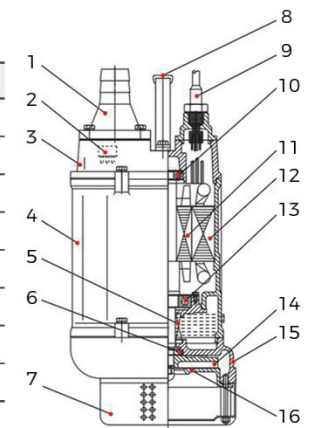
### Hydraulic Performance Curves



### Materials Table

No.	Part	Material
1	Hose coupling	Cast iron
2	Thermal protector	
3	Upper cover	Cast iron
4	Motor cover	Cast iron
5	Oil seal	
6	Mechanical seal	Lower: Sic-Sic Upper: Carbon-Sic (≤2.2kW) Lower: Sic-Sic Upper: Sic-Sic (≥3.7kW)
7	Strainer	Steel
8	Handle	Steel

No.	Part	Material
9	Cable	
10	Bearing	
11	Rotor	
12	Stator	
13	Bearing	
14	Impeller	High chrome alloy
15	Pump body	Cast iron
16	Inlet plate	Ductile iron



### Package Information

Model	N.W (kg)	GW (kg)	L (mm)	W (mm)	H (mm)	Quantity (PCS/20' TEU)
KBZ47.5	105	114	805	365	390	215
KBZ411	130	140	895	415	440	160
KBZ415	142	153	895	415	440	160
KBZ67.5	106	114	835	365	390	205
KBZ611	133	143	855	415	440	160
KBZ615	145	156	895	415	440	160





### Application

- Civil engineering
- Mines, quarries, Coal ore & slurries
- Sewage treatment plants
- General pumping purposes
- Pumping fluid: sludge, liquids containing mud and bentonite

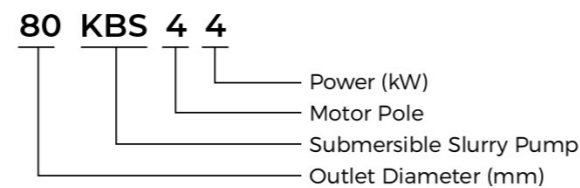
### Pump

- Max. liquid temperature: +40°C
- Flow: up to 60 m<sup>3</sup>/h
- Head: up to 57 m
- Power: 1.5 kW (2 HP) to 15 kW (20 HP)
- Max. Immersion depth: 25 m
- Cable Length: 8 m

### Motor

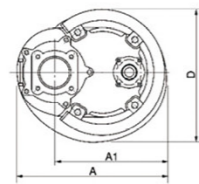
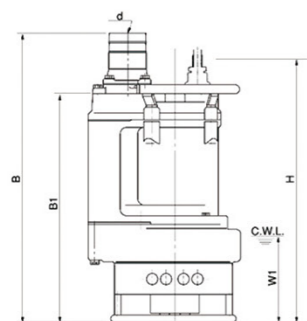
- Copper winding
- Insulation class: B
- Protection class: IP68

### Identification Codes



### Technical Data

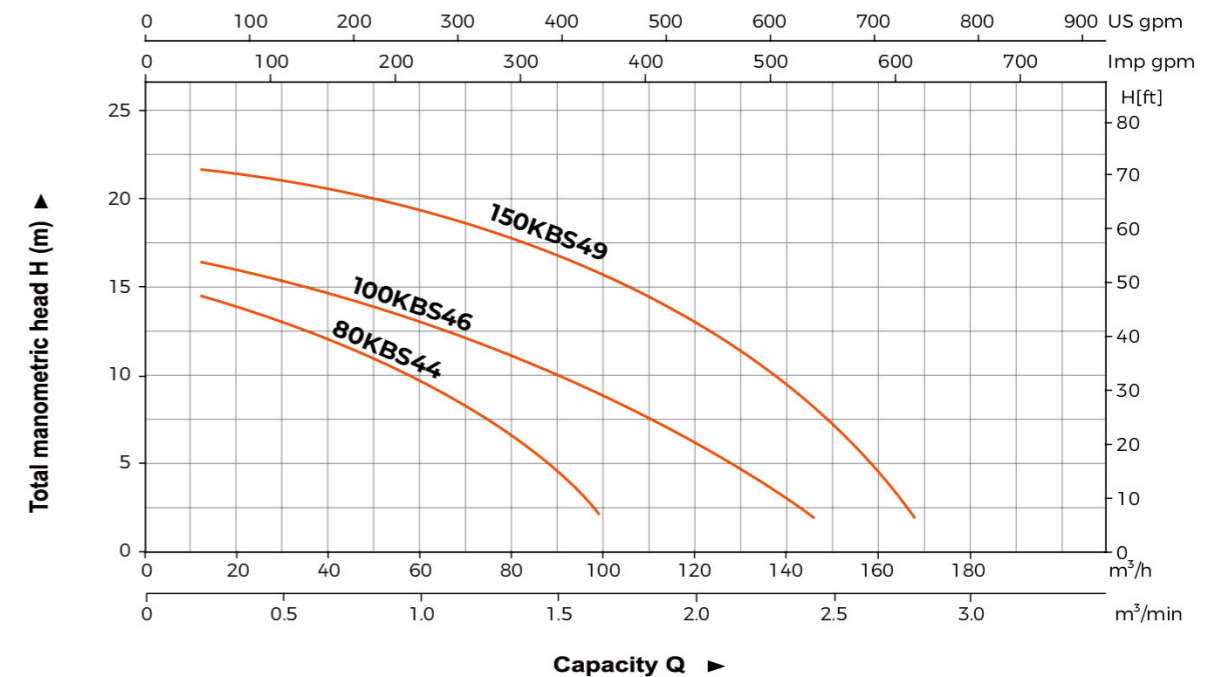
Model	Power		Discharge mm	Max. flow		Max. head m	Max. Solid Dia mm
	kW	HP		m <sup>3</sup> /h	l/min		
80KBS44	4	5.5	80	99	1650	14.8	30
100KBS46	6	8	100	144	2400	16.9	30
150KBS49	9	12	150	192	3200	21.5	30



### Dimension

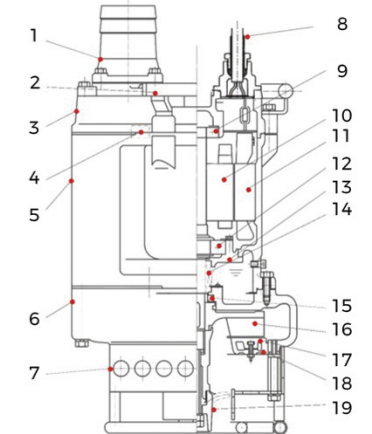
Model	d (mm)	A (mm)	A1 (mm)	B (mm)	B1 (mm)	D (mm)	H (mm)	W1 (mm)
80KBS44	80	350	260	816	666	326	730	250
100KBS46	100	415	305	844	688	373	730	250
150KBS49	150	434	324	889	709	407	776	250

### Hydraulic Performance Curves



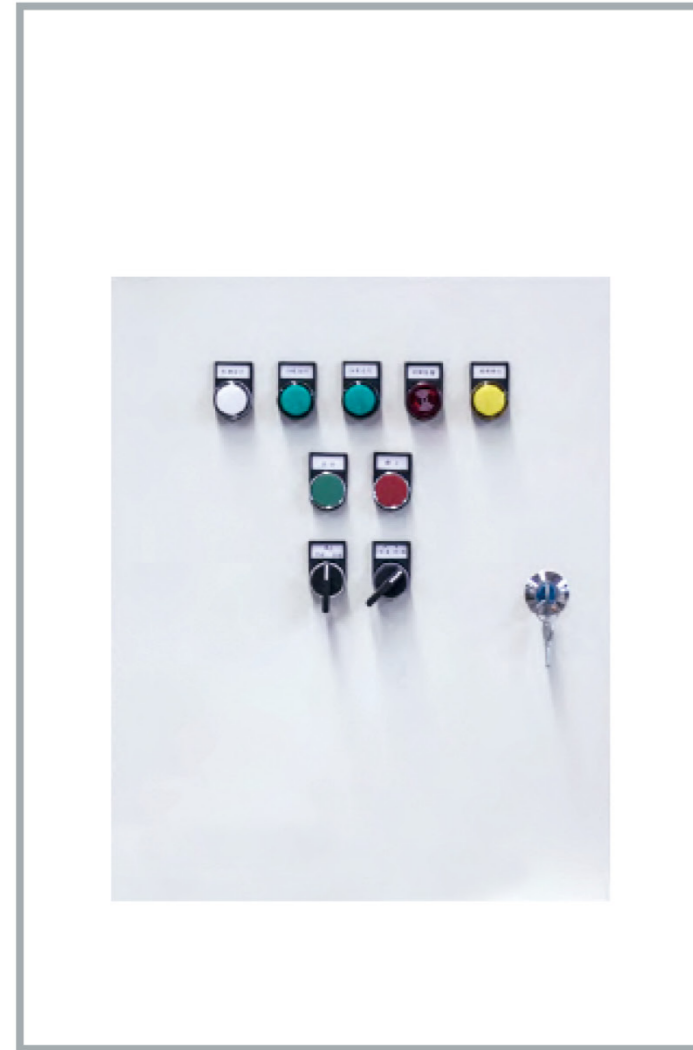
### Materials Table

No.	Part	Material	No.	Part	Material
1	Hose coupling	Cast iron	11	Stator	
2	Handle	Steel	12	Bearing	
3	Upper cover	Cast iron	13	Bearing house	Cast iron
4	Motor protector		14	Mechanical seal	Sic-Sic/Sic-Sic
5	Motor body	Cast iron	15	Oil seal	
6	Pump body	Cast iron	16	Impeller	High chrome alloy
7	Strainer	Steel	17	Inlet plate	High chrome alloy
8	Cable		18	Inlet base	Cast iron
9	Bearing		19	Agitator	High chrome alloy
10	Rotor				



### Package Information

Model	N.W (kg)	GW (kg)	L (mm)	W (mm)	H (mm)	Quantity (PCS/20'TEU)
80KBS44	105	113	855	415	400	190
100KBS46	145	156	415	475	990	143
150KBS49	170	184	475	475	1050	118



### Control Box

- The device is specially designed for automatic water drainage in pump stations, elevator shafts, sewage pits, etc.

### Features

- Liquid level control
- Excellent anti-interference performance
- The primary pump and standby pumps can be set arbitrarily. In case the primary pump is failed or water output is less than input, the standby pump(s) start to run automatically
- Display of Power and Operating status
- Manual and automatic operation mode for selection
- Protection of earth leakage, overcurrent, overvoltage, overheating and phase loss
- Audible and visual alarm

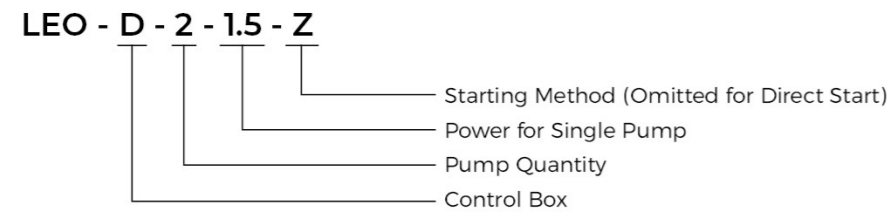
### Operating Conditions

- Ambient temperature: 5 ~ 40°C
- Humidity: ≤90%
- Operating voltage: 380 V ± 10%
- Ambient environment: Freedom from corrosive gases and/or conductive dust

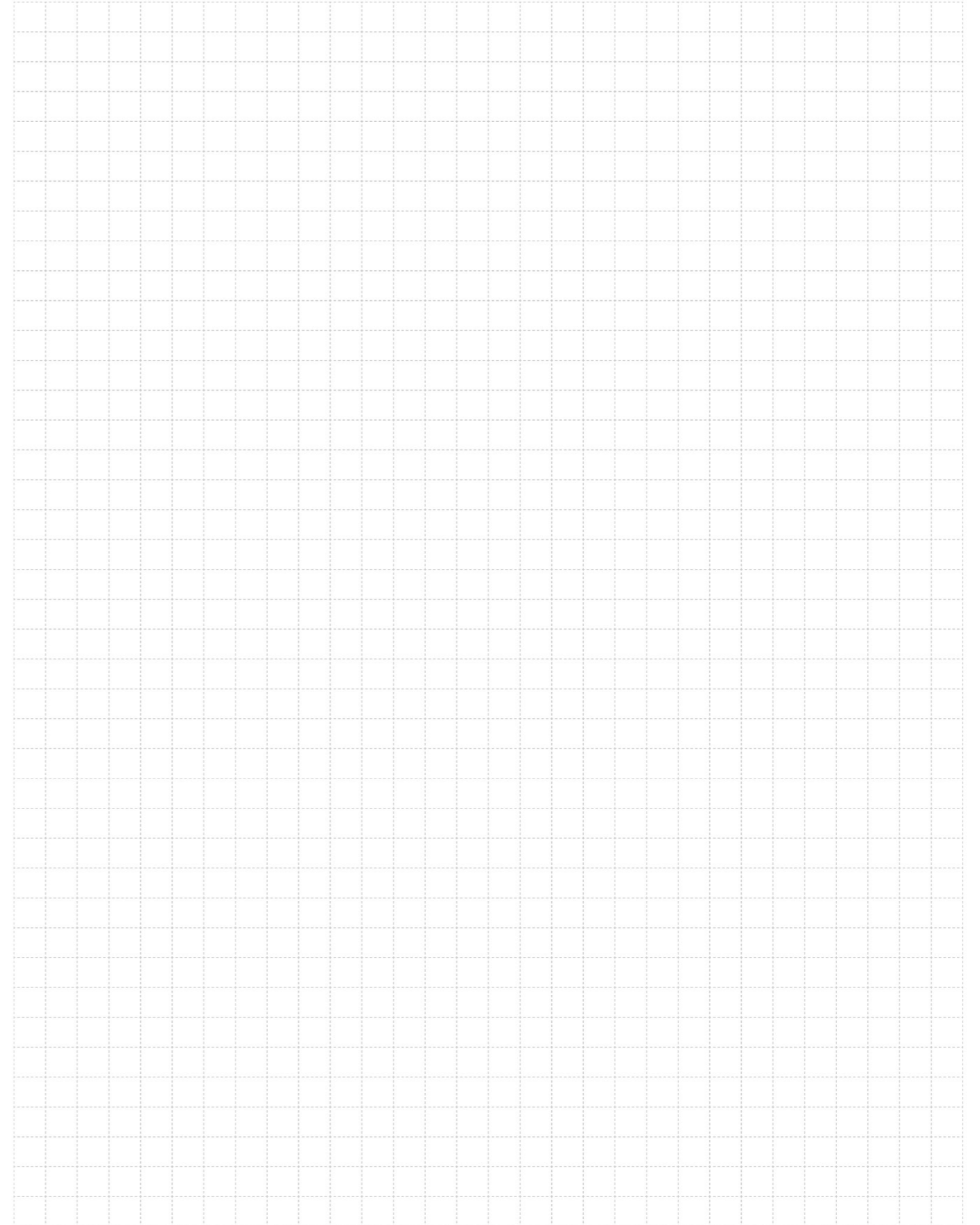
### Instructions

- DOL (Direct On Line): High starting current. Applicable for pumps with power up to 15 kW.
- Autotransformer Starter: Small starting current. Applicable for pumps with power more than 15 kW.
- Soft Starter: Smooth starting current with small influence on the grid. Applicable for pumps with power more than 15 kW.

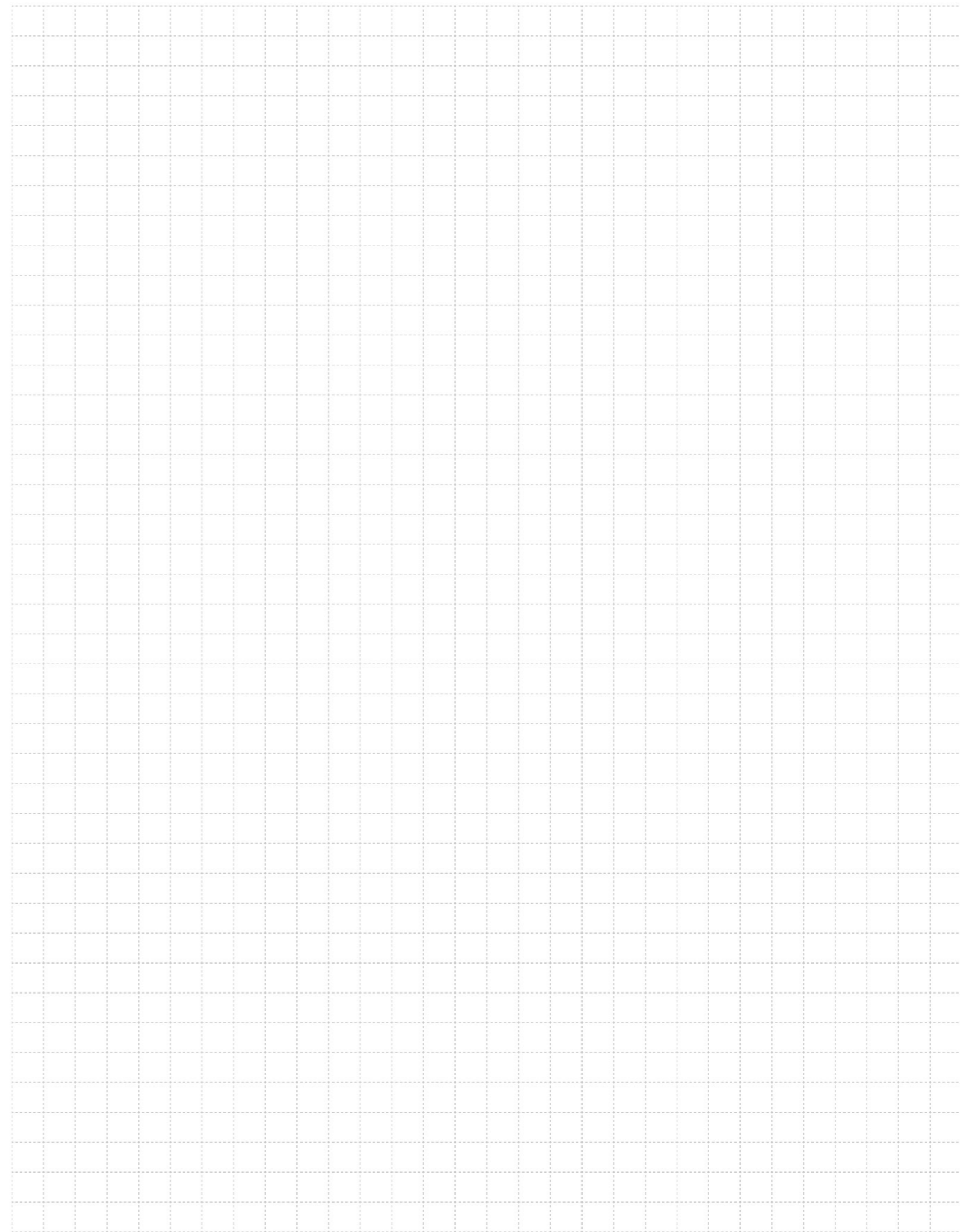
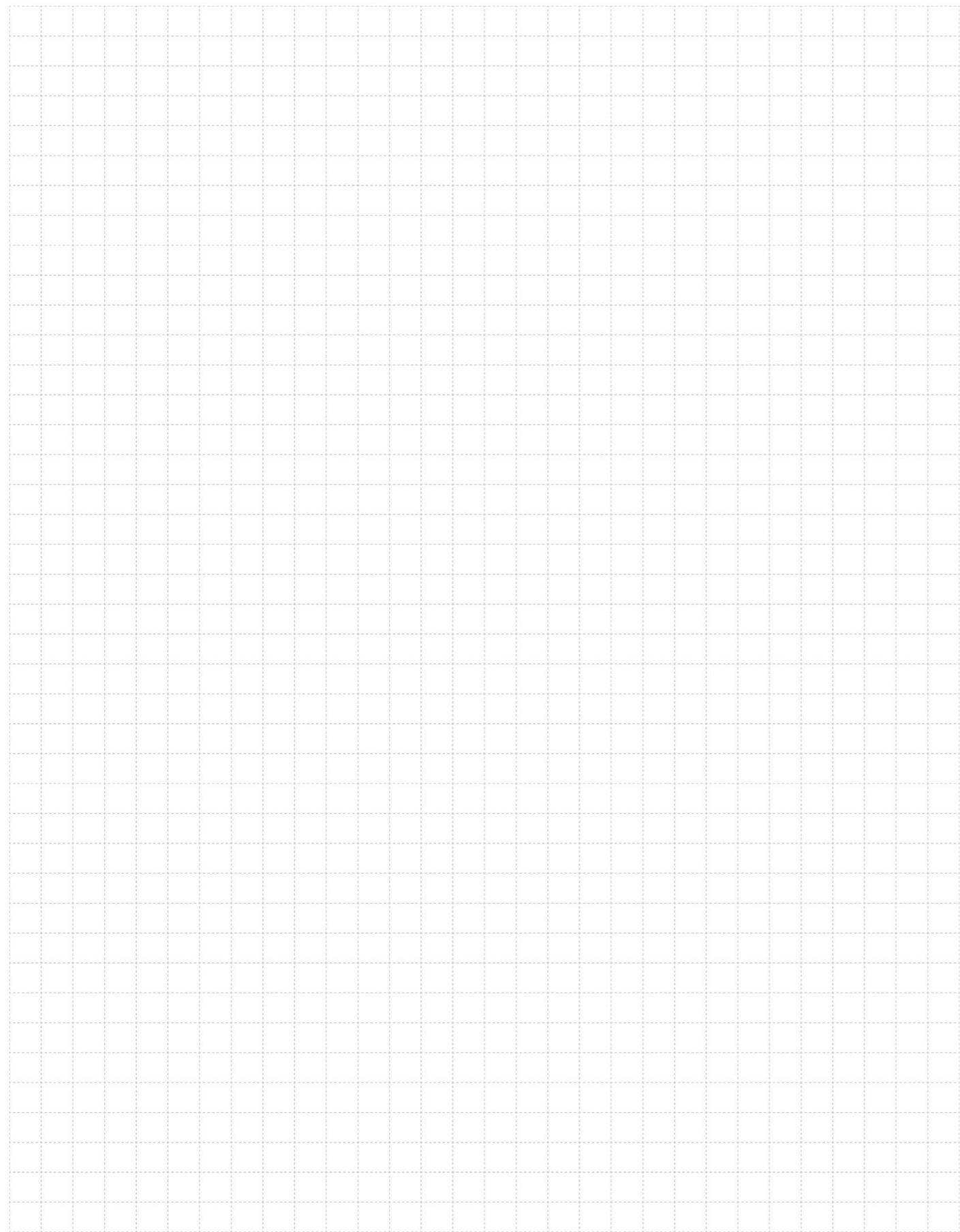
### Identification Codes



	Q	Z	R
Starting Method	Direct on Line	Autotransformer Starter	Soft Starter
Controlled Quantity	1	2	3
Control Mode	For One Pump	For Three Pumps	For Four Pumps







# PUMP RANGE

## Peripheral Pump



## Self-Priming Peripheral Pump



## Jet Pump



## Jet Pump for Deep Wells



## Centrifugal Pump



## Multistage Centrifugal Pump



## Horizontal Multistage Centrifugal Pump



## Permanent Magnet Intelligent Booster



## Self-Priming Centrifugal Pump



## Submersible Pump



## Domestic Lifting Station



## Pool Pump



## Garden Jei Pump



## Garden Pressure System



## Fountain Pump



## Garden Submersible Pump



## Petrol Lawnmowers



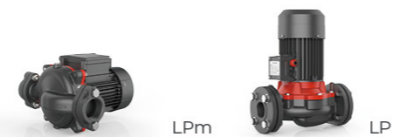
## Wall-Mounted Gas Boiler Pump



## Circulation Pump



## Booster Pump



## Stainless Steel Centrifugal Pump



## Semi-open Impeller Stainless Steel Centrifugal Pump



## Stainless Steel Horizontal Multistage Pump



## Intelligent Pressure Booster System



## Vertical Multistage Pump



## Pressure Booster System



## Stainless Steel Standard Centrifugal Pump



## Standard Centrifugal Pump



## End Suction Centrifugal Pump



## Vertical In-line Pump



# PUMP RANGE

## Submersible Sewage Pump



## Submersible Dewatering Pump



## Submersible Slurry Pump



## Gasoline/Diesel Water Pump



## Generators



## Submersible Borehole Pump 2", 2.5", 3", 4", 5", 6"



## Solar Pumping System

